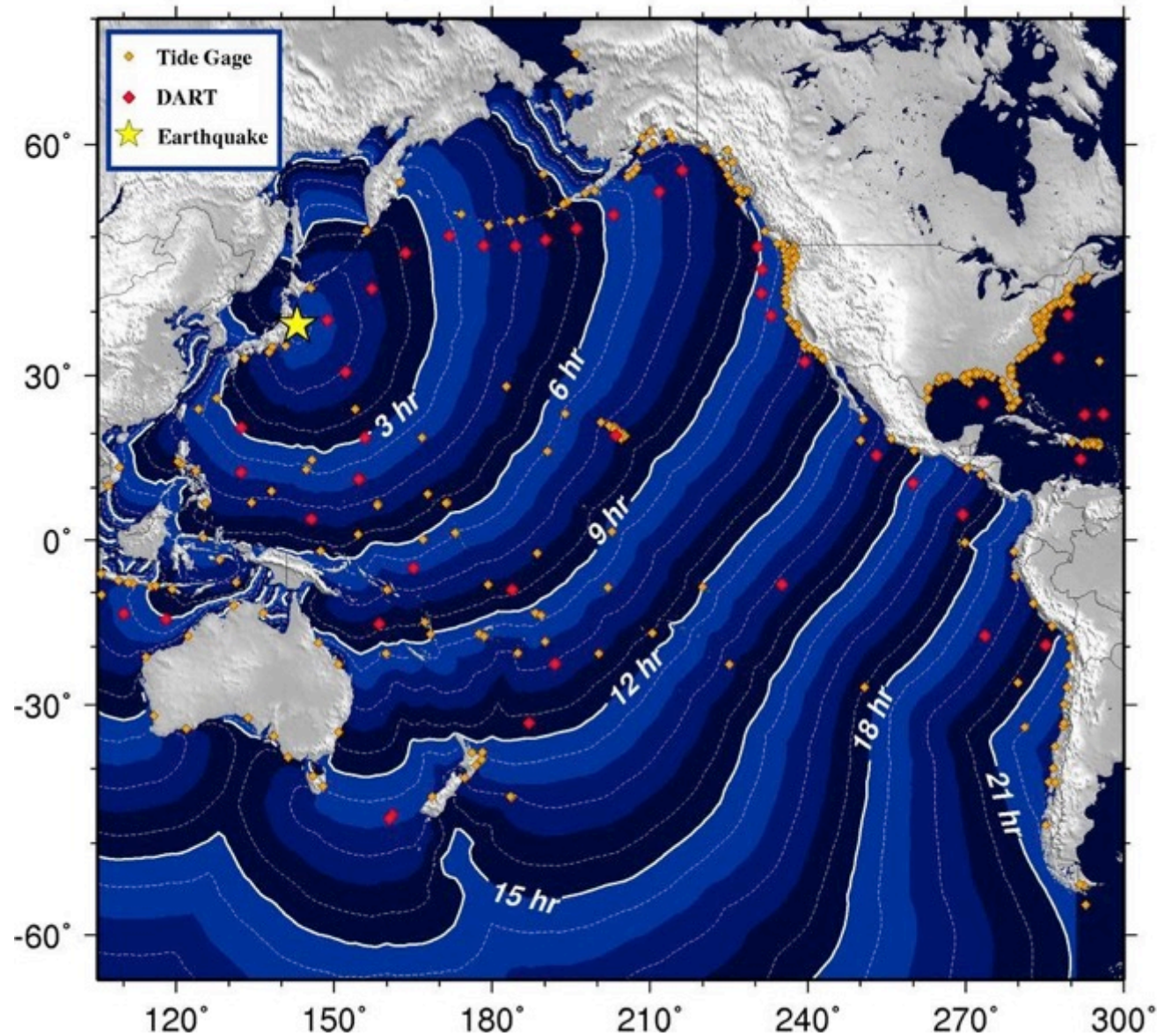


# Pacific Ocean Tsunami Generated by Japan Earthquake

Near the earthquake, there were only ~20 minutes to evacuate. A "local tsunami" for Japan.

Travel times are well known for tsunamis crossing the Pacific Ocean.

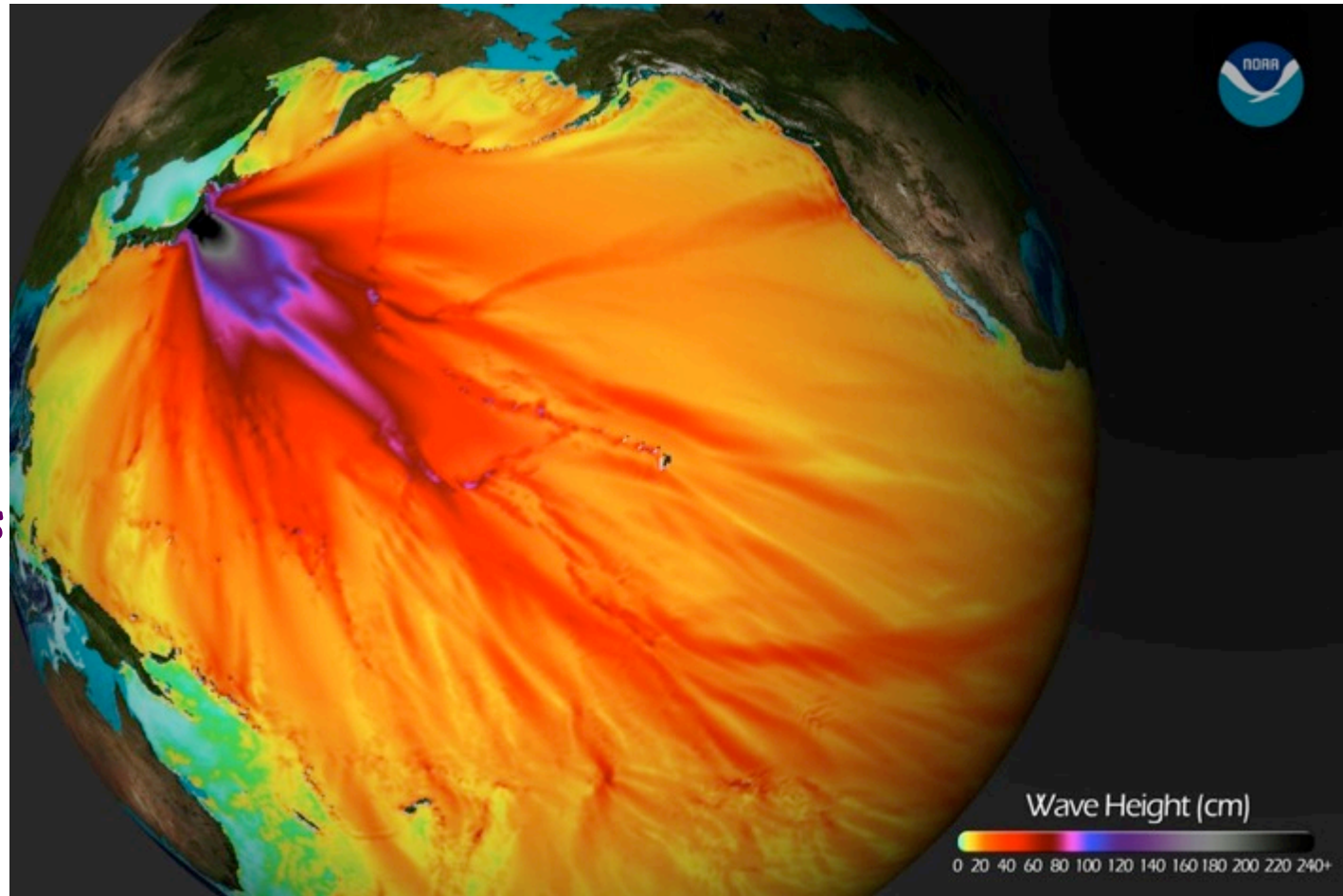
At distant locations, there were hours of advance warning. A "distant tsunami" for Washington coast.



# Pacific Ocean Tsunami Generated by Japan Earthquake

Tsunami height model shows forecast wave height (in cm).

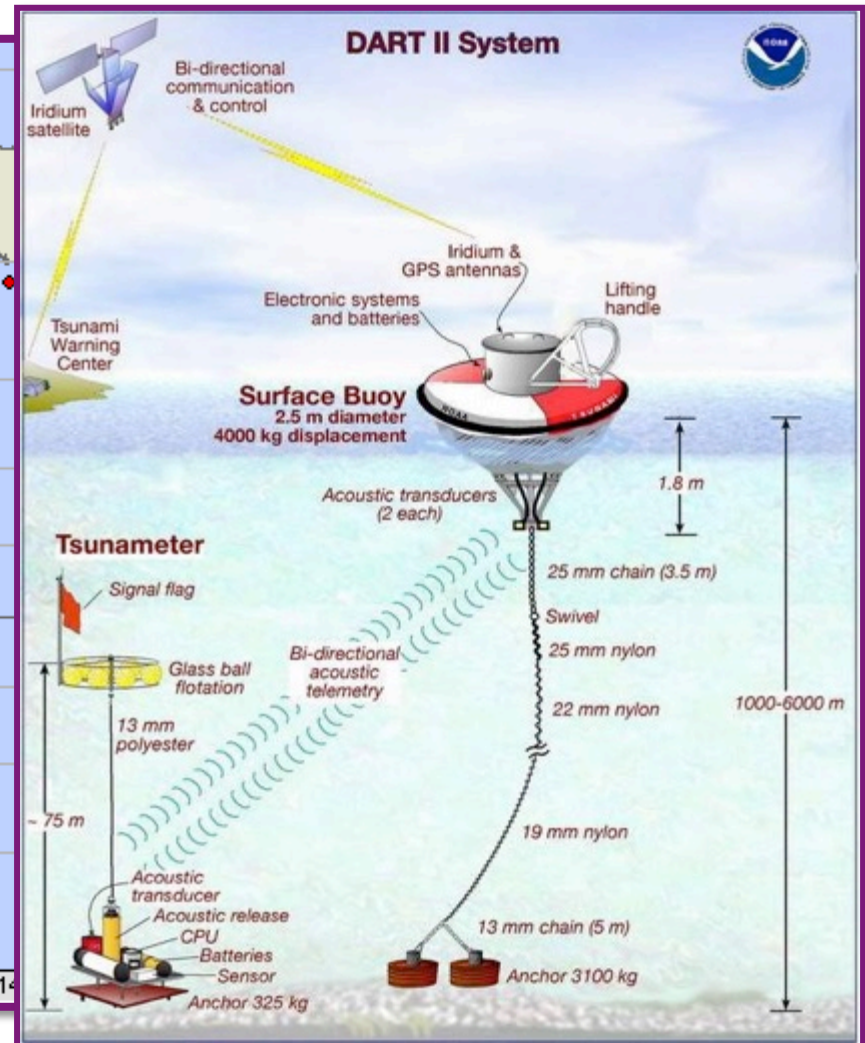
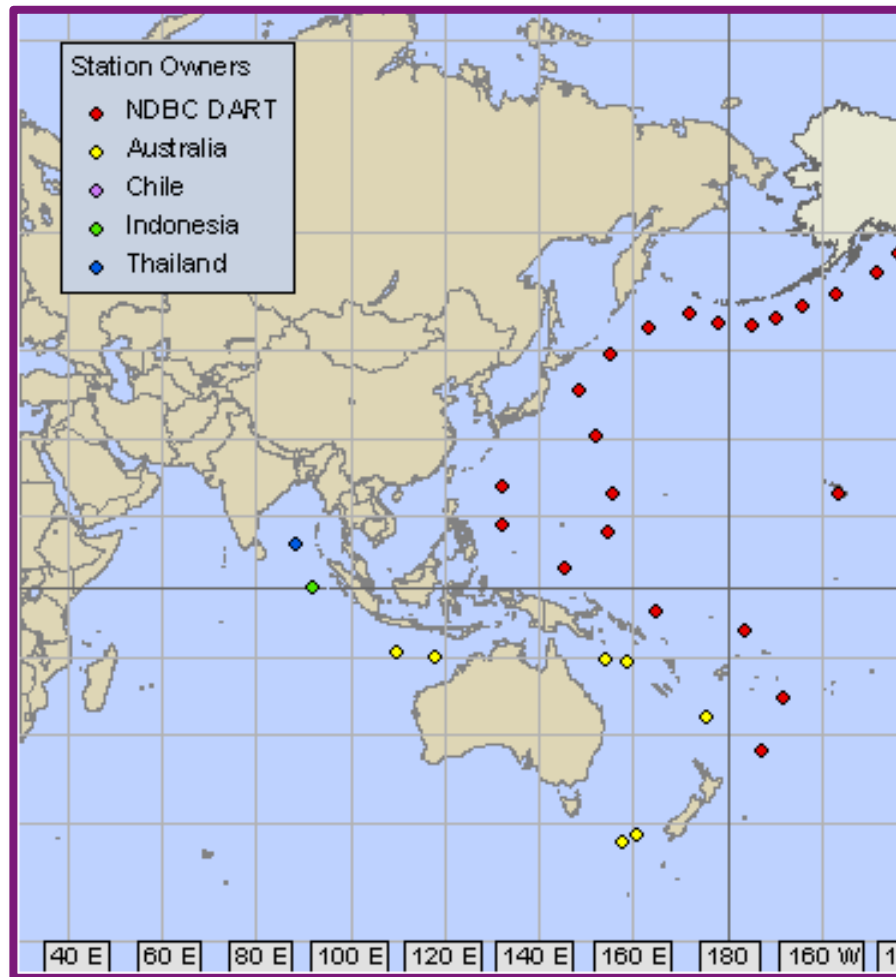
Ocean floor bathymetry affects the wave height because of reflections and refractions from seafloor features and islands.



Tsunami evacuations were ordered for Hawaii, Oregon, and northern California but not Washington. Wave heights were accurately predicted.



# Deep-ocean Assessment and Reporting of Tsunami (DART)

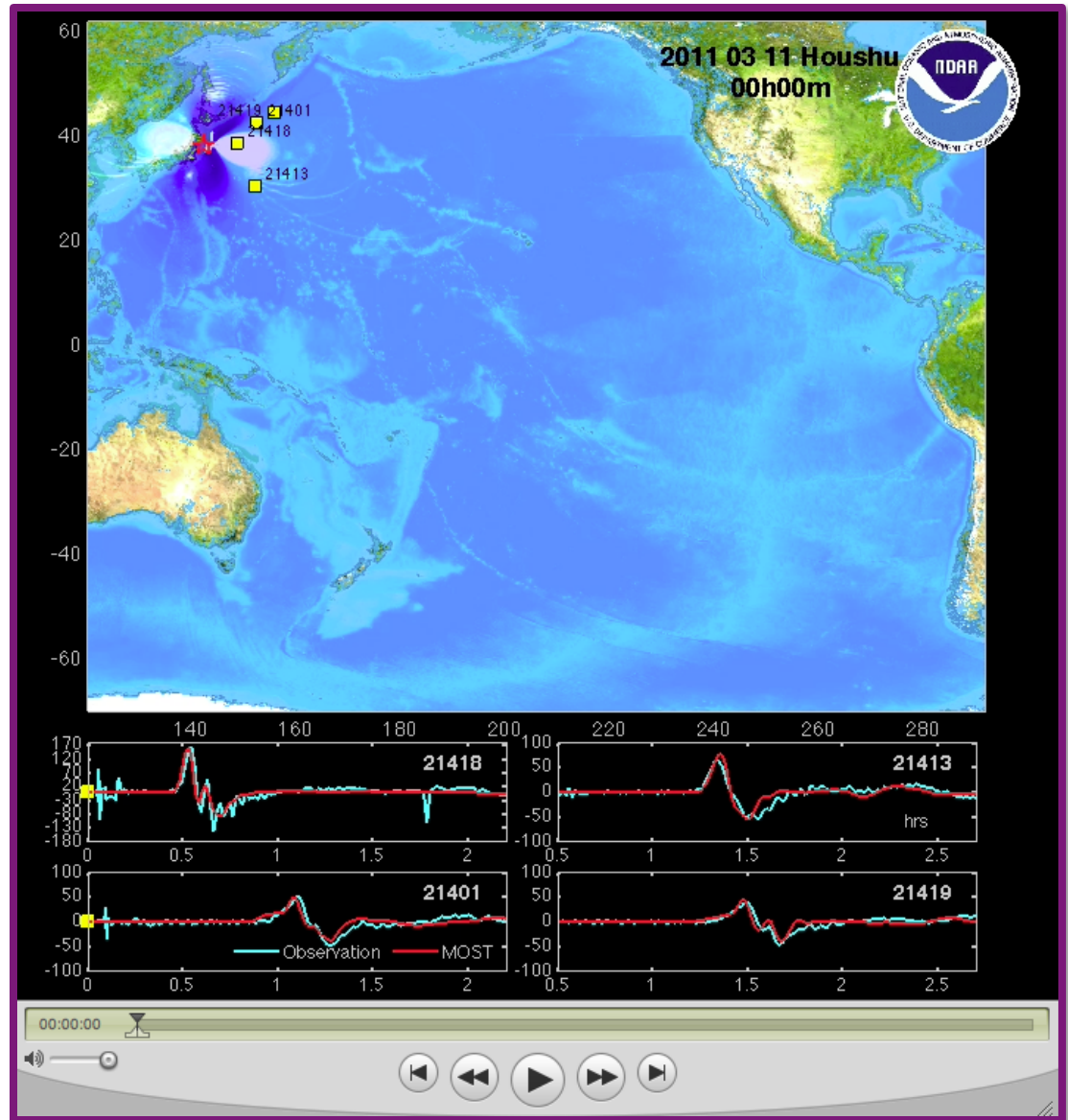


# Pacific Ocean Tsunami Generated by Japan Earthquake

Peak-to-trough wave height was nearly 2 m at nearest DART buoy in 4000 m water depth!

Travel time to Oregon and Washington coast was about 9 hours.

Largest waves affected OR and CA MANY hours after first waves arrived.



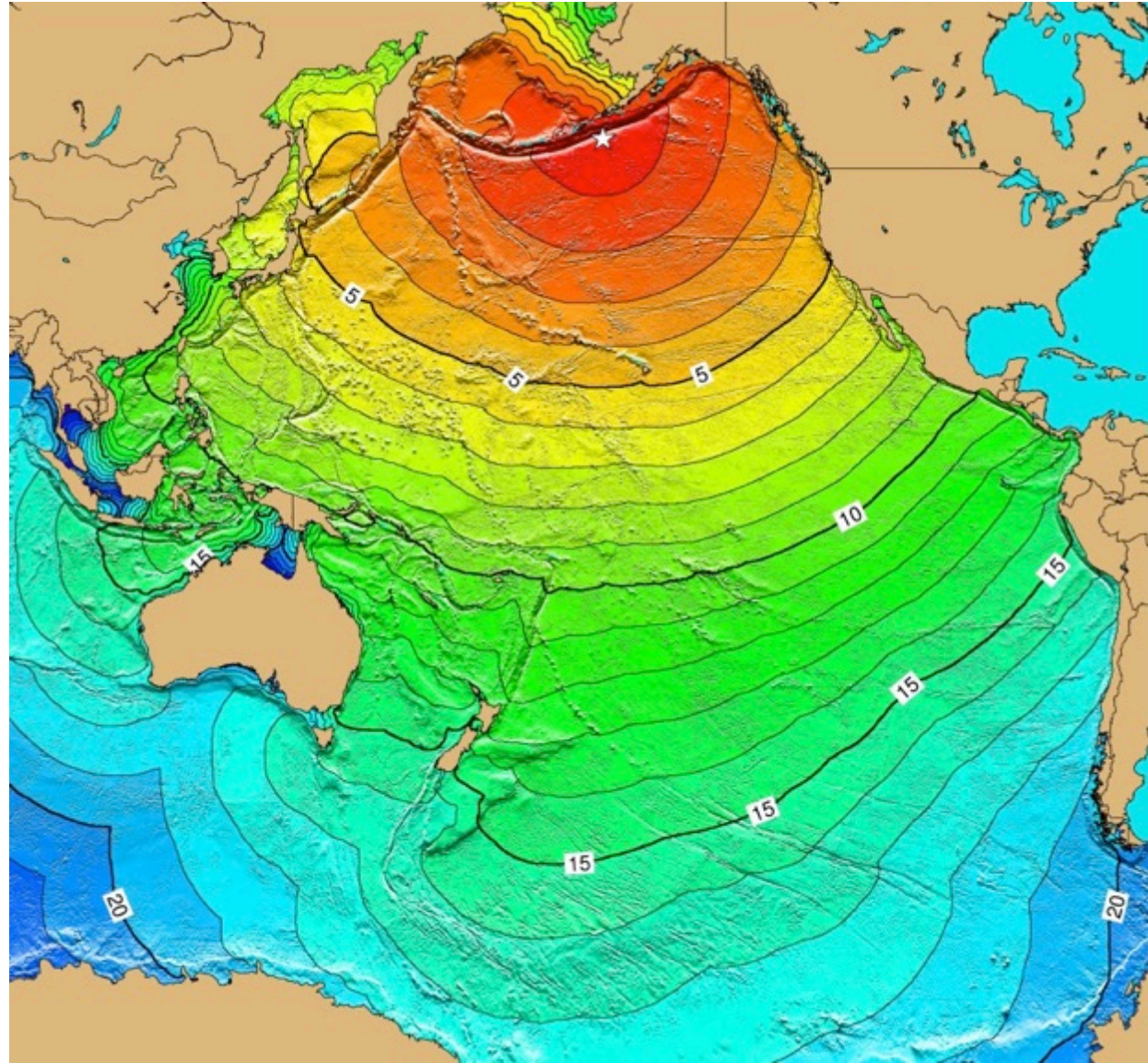


# Pacific Ocean Tsunami Generated by Alaska Earthquake

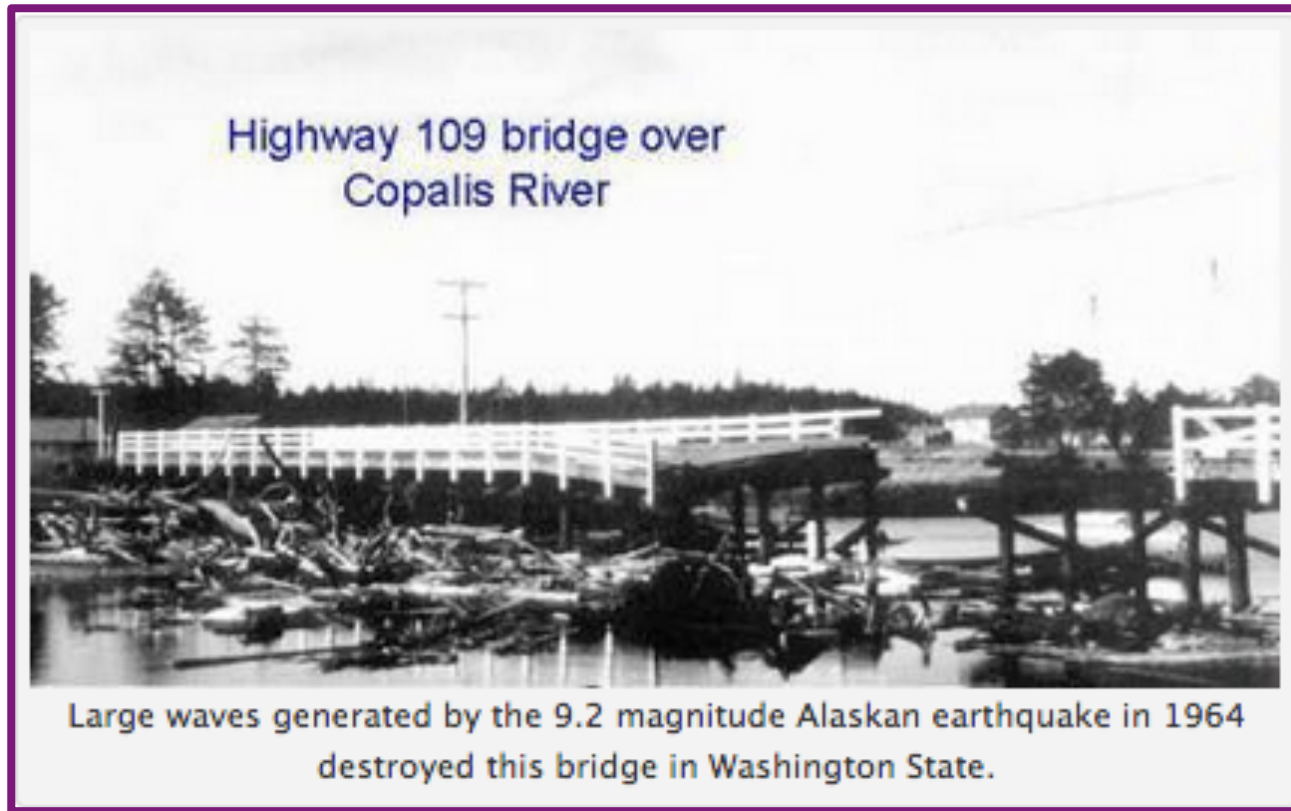
About four hours travel time to Washington and Oregon Coast.

Tsunami from 1964 Alaska EQ killed 4 children on Beverly Beach. The largest of 28 distant tsunamis to affect Oregon coast since 1854.

Significant damage in Seaside and Cannon Beach, OR. Major destruction and 13 deaths in Crescent City, CA.



# Damage in Copalis Beach from 1964 Alaska Tsunami

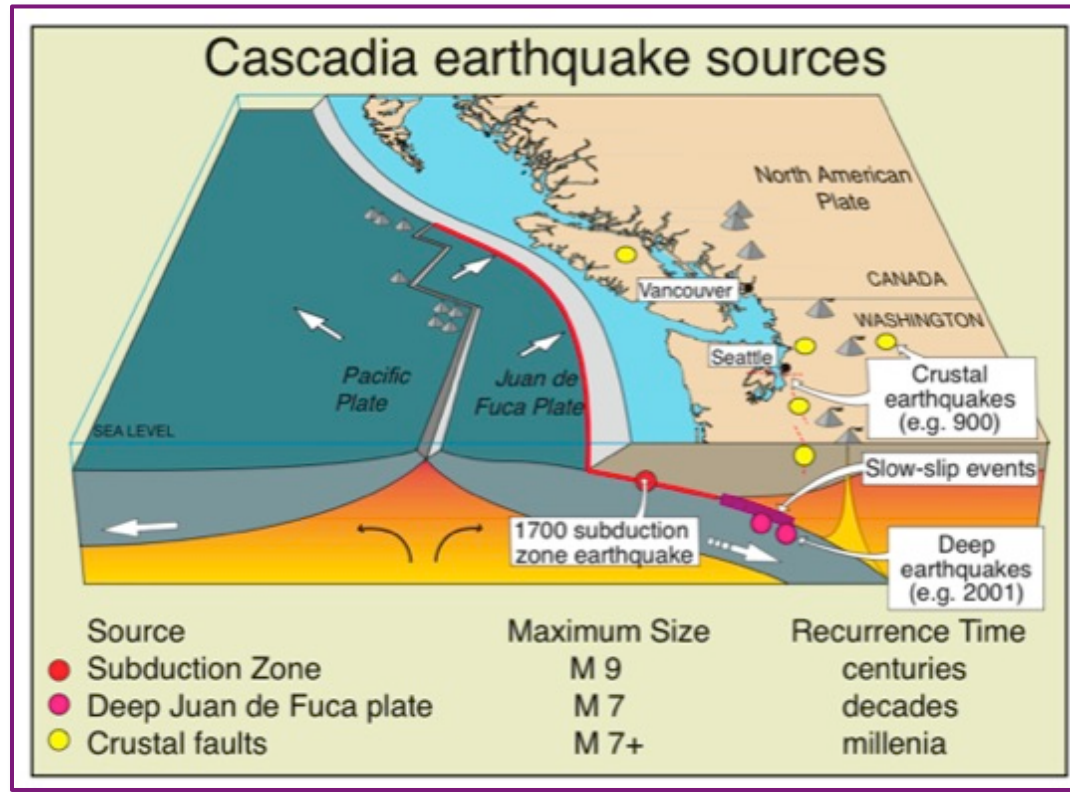


Bridge over Copalis River destroyed.

"Distant" tsunami: A tsunami generated by a distant earthquake (e.g. Alaska 1964; Japan 2011). The first waves will arrive several hours after the earthquake and may arrive for many hours thereafter.



# Past Great Cascadia Earthquakes and Tsunamis



Juan de Fuca subducts beneath Pacific Northwest portion of North American Plate at Cascadia subduction zone.

Last great Cascadia earthquake occurred on January 26, 1700 at about 9:00 PM local time.

Analogous to Sumatra 2004, Chile 2010, and Tohoku, Japan 2011 great earthquakes.

# Some Coast Areas Now Below Sea Level Yuriage



Before



After

- Some areas that were above sea level on march 10 dropped below sea level on March 11, 2011.
- This also happened along the Washington - Oregon coast during the 1700 AD great Cascadia earthquake.



# Drowned Forests of Coastal Oregon and Washington



Ghost forest on Copalis River



Brian Atwater, USGS Seattle

Coastal "drowned forests" record the history of slow uplift between and sudden subsidence during great Cascadia earthquakes.

# Drowned Forests of Coastal Oregon and Washington



David Yamaguchi



Trees in "drowned forests" near shore died when the ground dropped and seawater killed the trees. Compare rings from victim trees with rings from witness trees on higher ground.

Result: Trees died between fall 1699 and spring 1700.



# Three-Layer Cake of Cascadia Tsunami Geology

*Cupcake Geology*



Niawiakum River east of Willapa Bay

Organic-rich forest soil covered by tsunami sand then intertidal mud and clay on top.

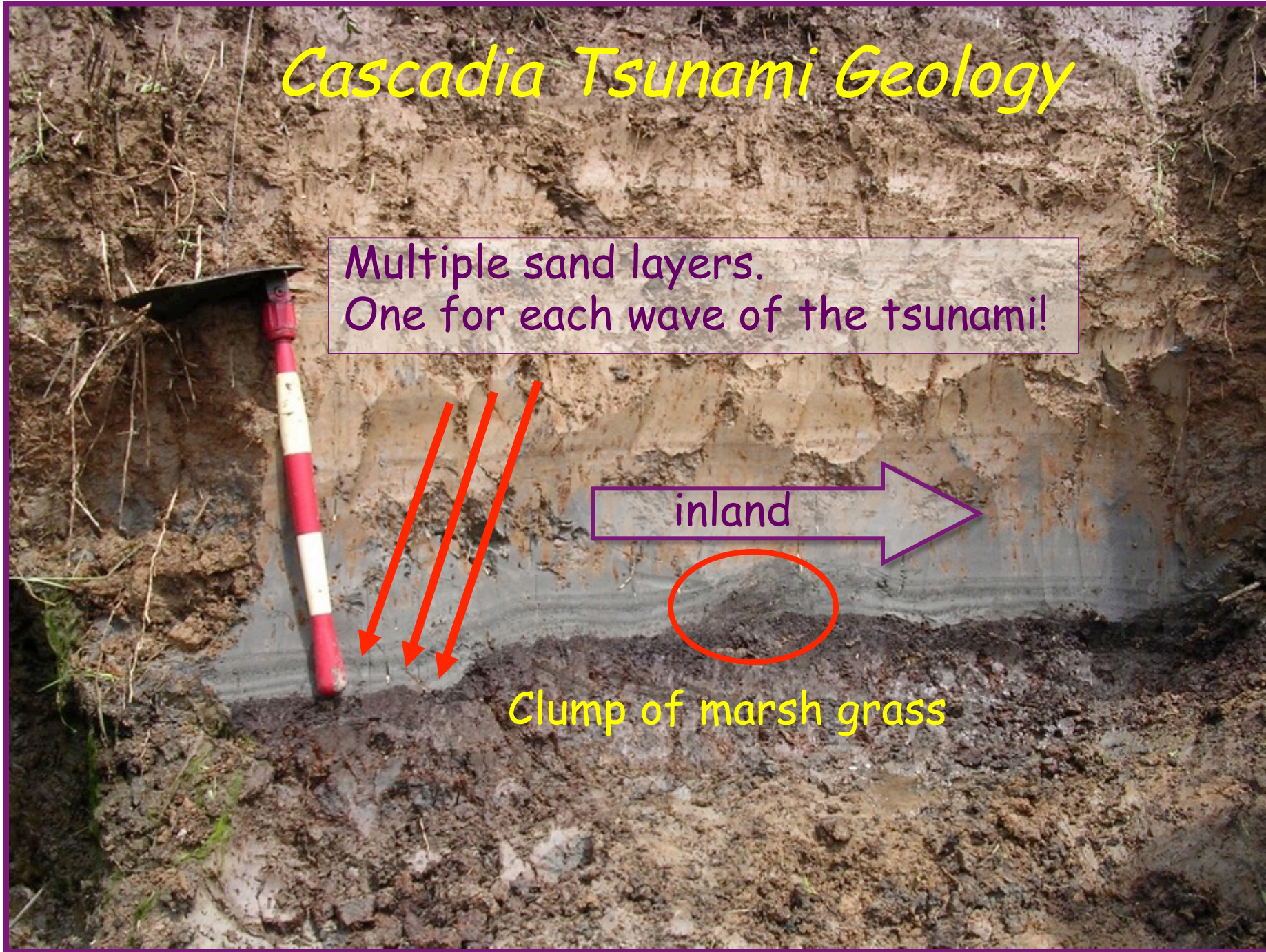


# *Cascadia Tsunami Geology*

Multiple sand layers.  
One for each wave of the tsunami!

inland

Clump of marsh grass





# Making a Ghost Forest

## Formation of Ghost Forest in a Subduction Zone

This animation illustrates:

- Geologic processes that result in a ghost forest
- Geologic evidence for past earthquakes & tsunamis in the Pacific Northwest

*Copalis River ghost forest a mile upstream from Washington coast  
(U.S. Geological Survey photograph)*

IRIS

# Buried Forest Soils



1700 AD

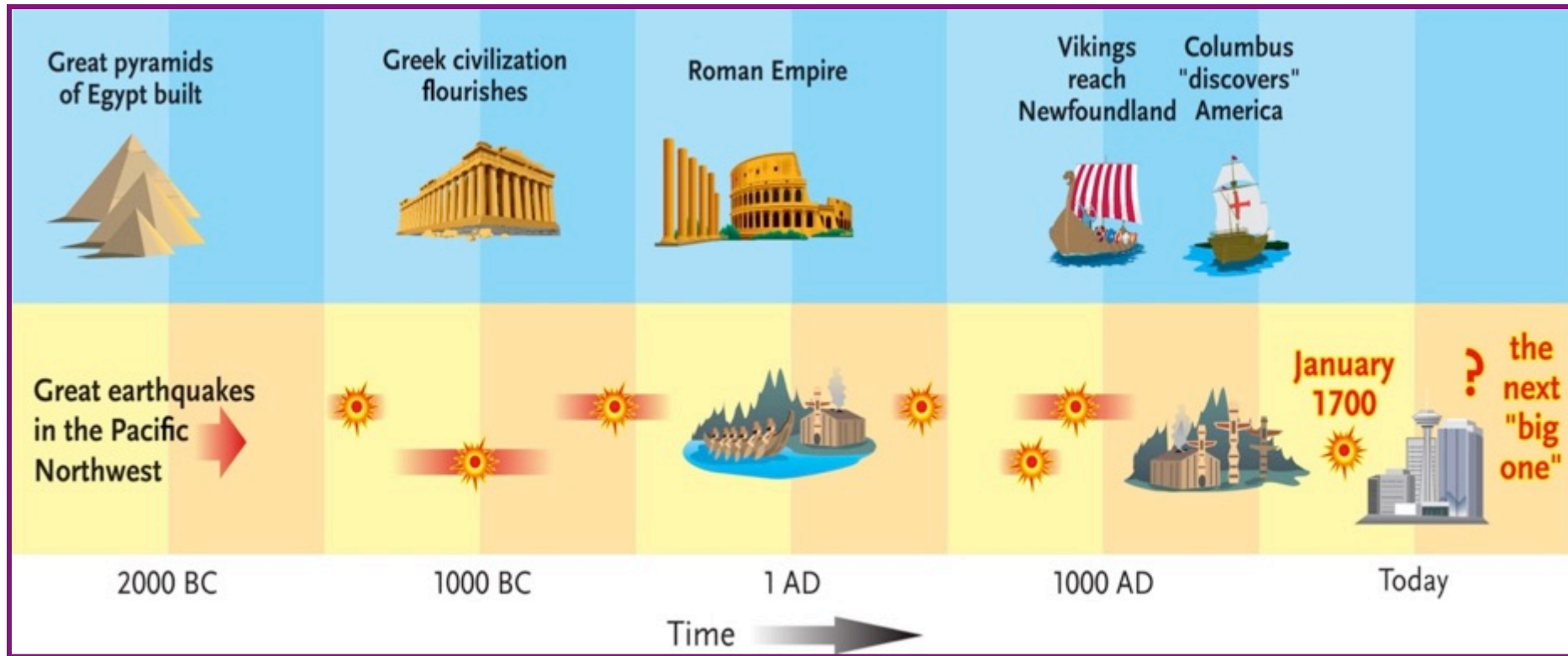


860(?) AD

Niawiakum River, east of Willapa Bay, WA.



# Recent Great Cascadia Earthquakes

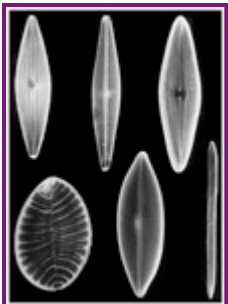


Average time between earthquakes = Recurrence time.  
Recurrence time for Great Cascadia EQs = 500 years.  
We are at 314 years and counting.

# *Cascadia Tsunami Geology Storyline*

Great earthquake January 26, 1700 @ 9 PM

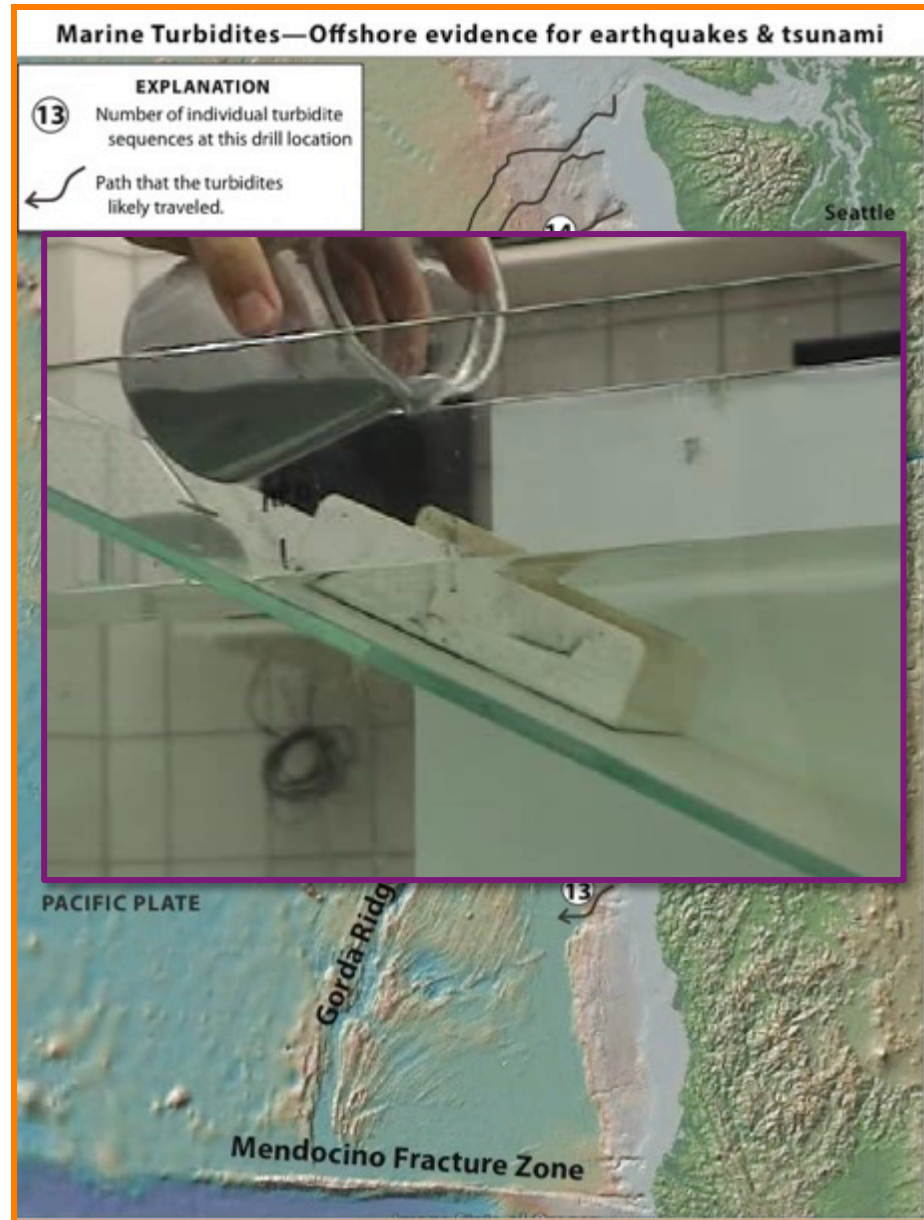
Ghost forests, buried soils, diatoms, tsunami sand sheets, liquefaction, turbidites, Native American oral history, and written Japanese history.





# Turbidites in Marine Sediment Cores

Sediment deposited on continental shelf can surge down submarine canyons in turbidity currents. The resulting "turbidite" layer has coarse sand on bottom and fine clay on top.



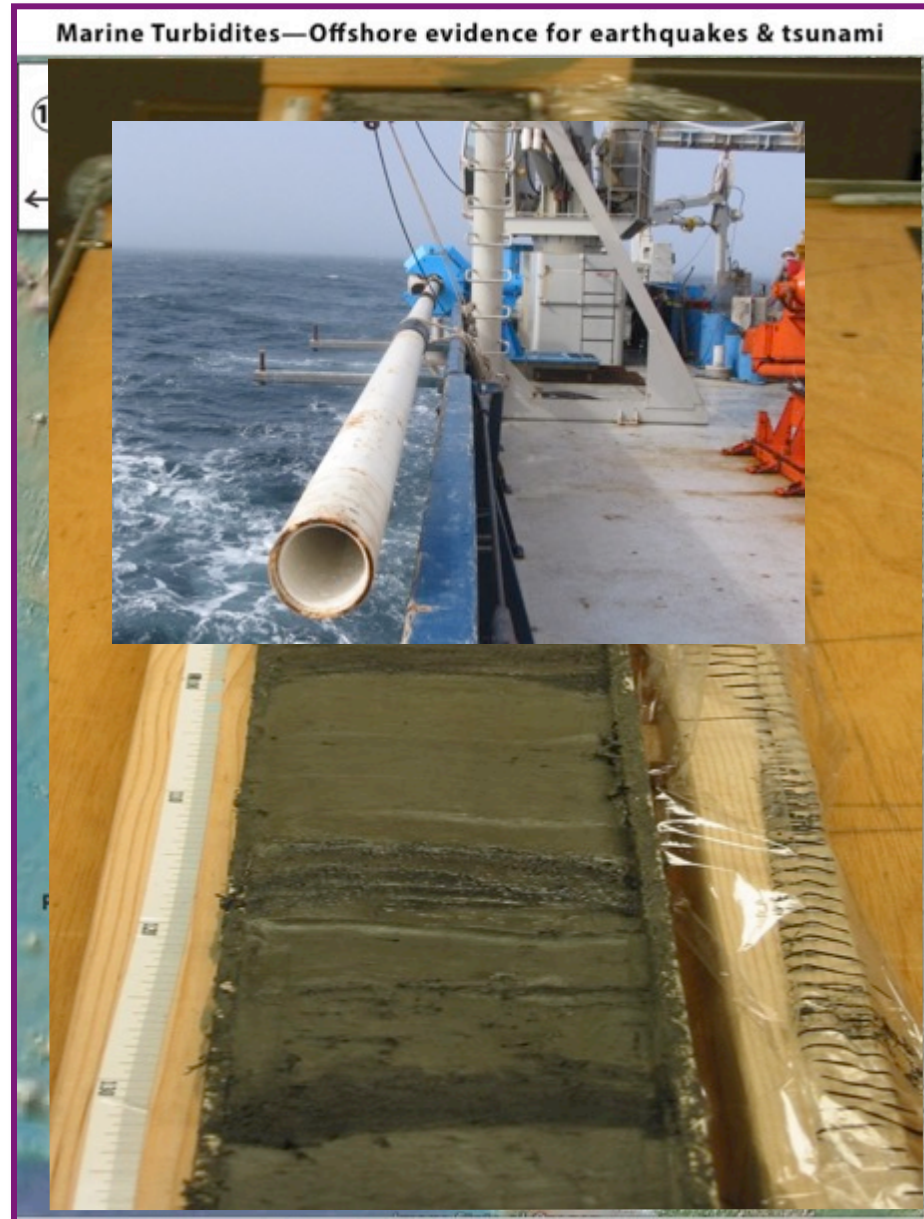
# Turbidites in Marine Sediment Cores

Chris Goldfinger (OSU).

Shaking by great Cascadia earthquakes caused turbidity currents.

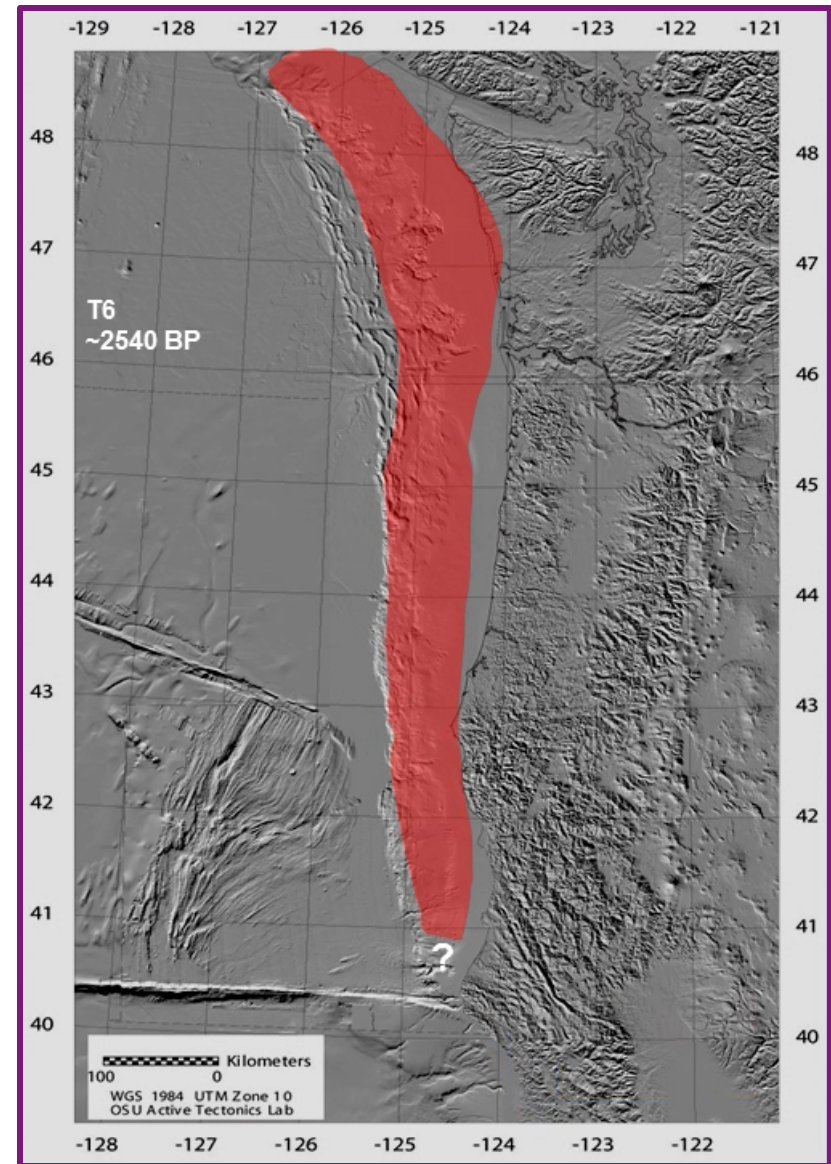
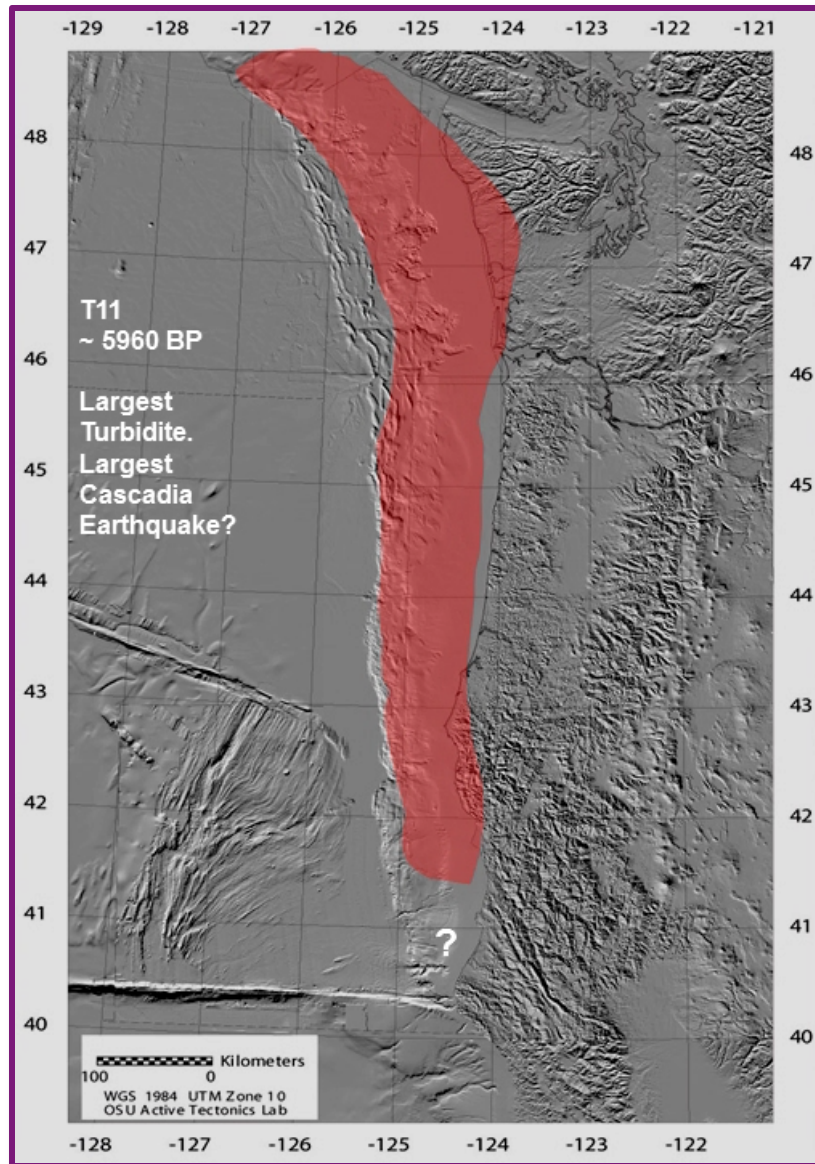
Ages of many seafloor turbidites match from offshore northern CA to BC.

Requires great earthquakes that ruptured entire or large segments of the plate boundary.



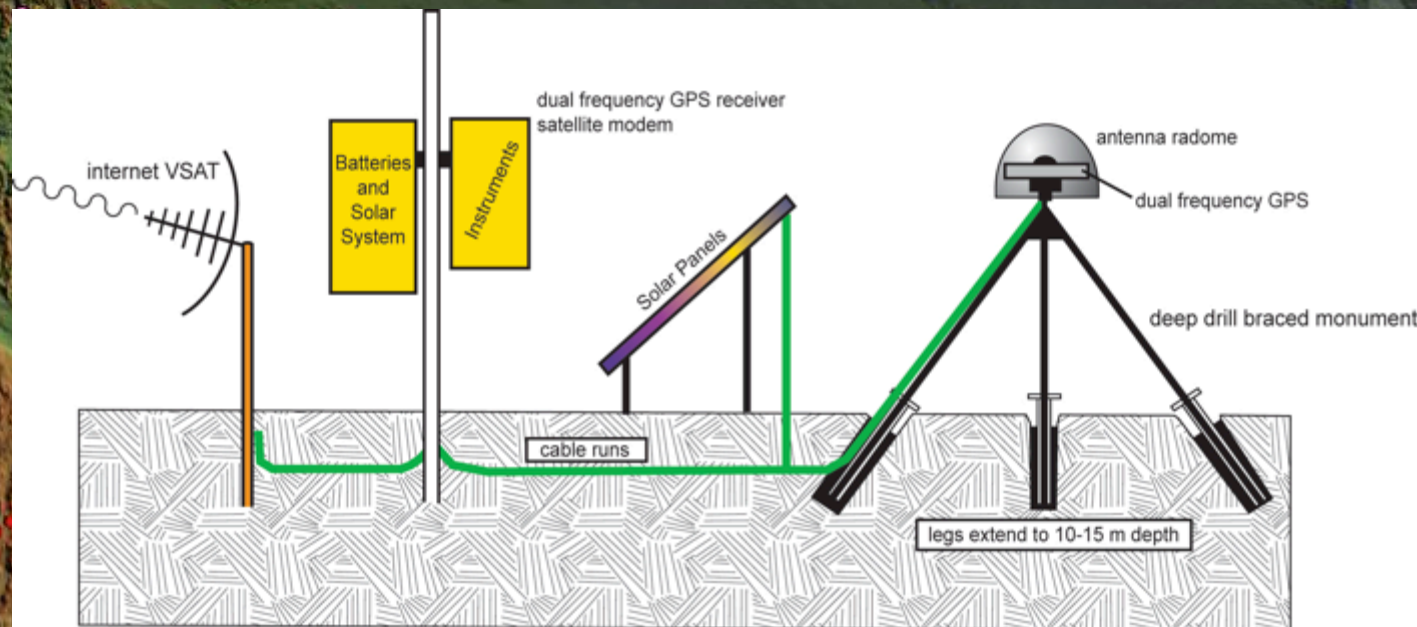


# Turbidites: The Movie





# Plate Boundary Observatory (PBO)



- 1100 permanent Global Positioning System (GPS) stations
- 78 Borehole Seismometers
- 74 Borehole Strainmeters (BSM)
- 26 Tiltmeters
- 6 Laser Strainmeters (LSM)

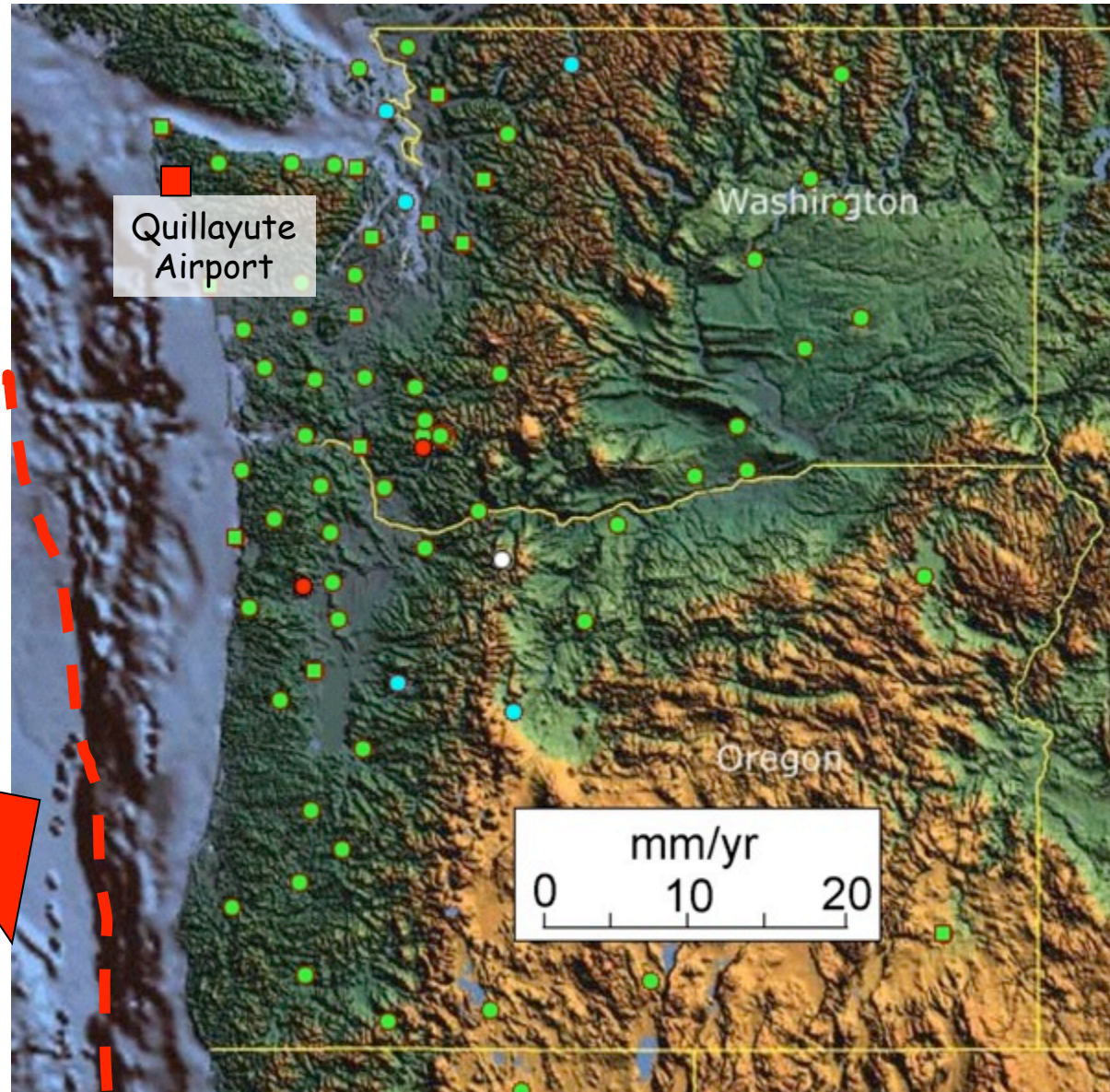
*Measure the broad temporal and spatial spectrum of plate boundary deformation*



# Cascadia Locked and Loading

Examine motions of  
GPS stations due to  
Juan de Fuca - North  
America plate  
convergence.

Juan de Fuca Plate



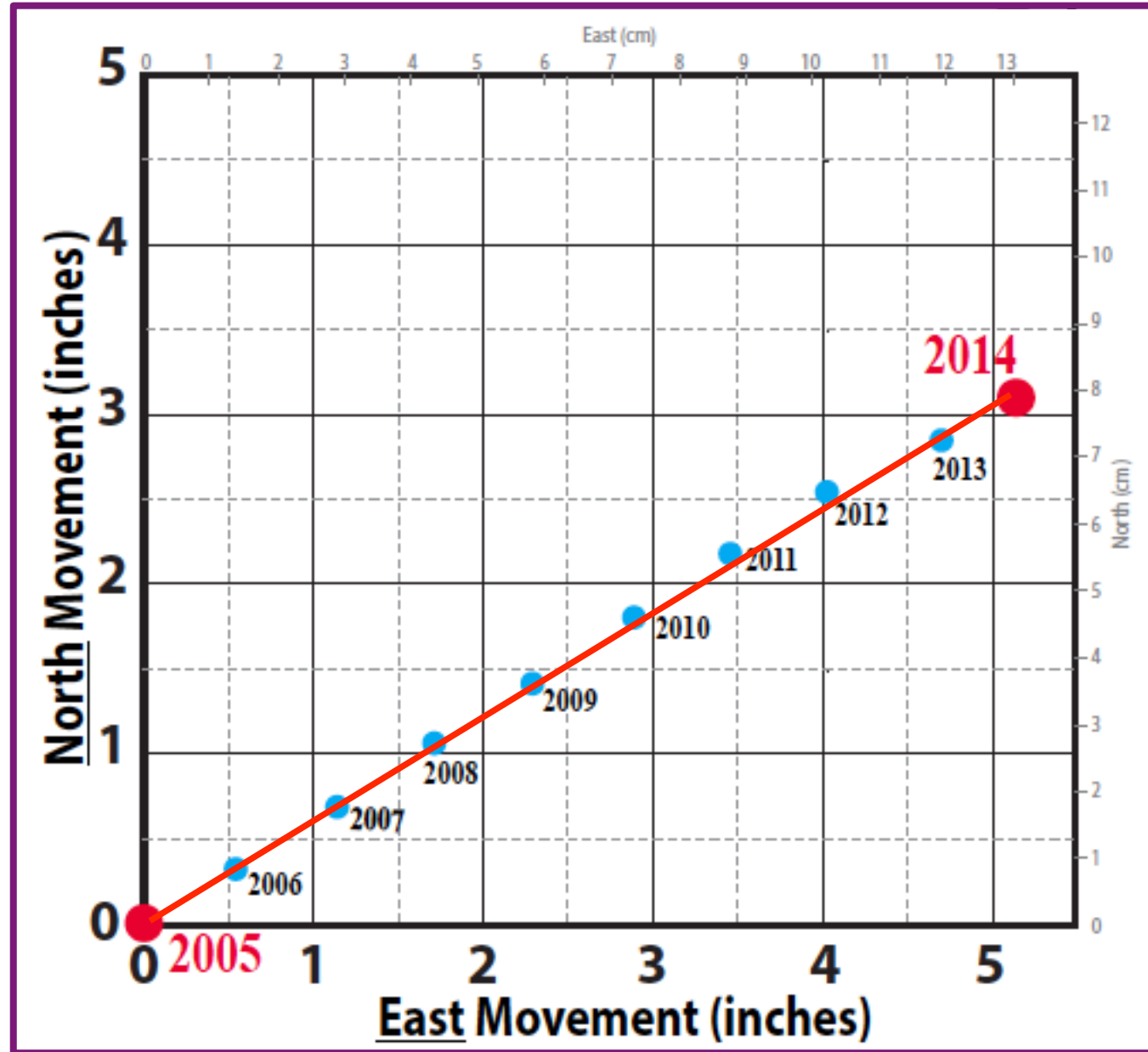
# Quillayute, WA GPS Observations

Northward motion  
= 0.35 inch/yr

Eastward motion  
= 0.59 inch/yr

Total motion  
= 0.69 inch/yr

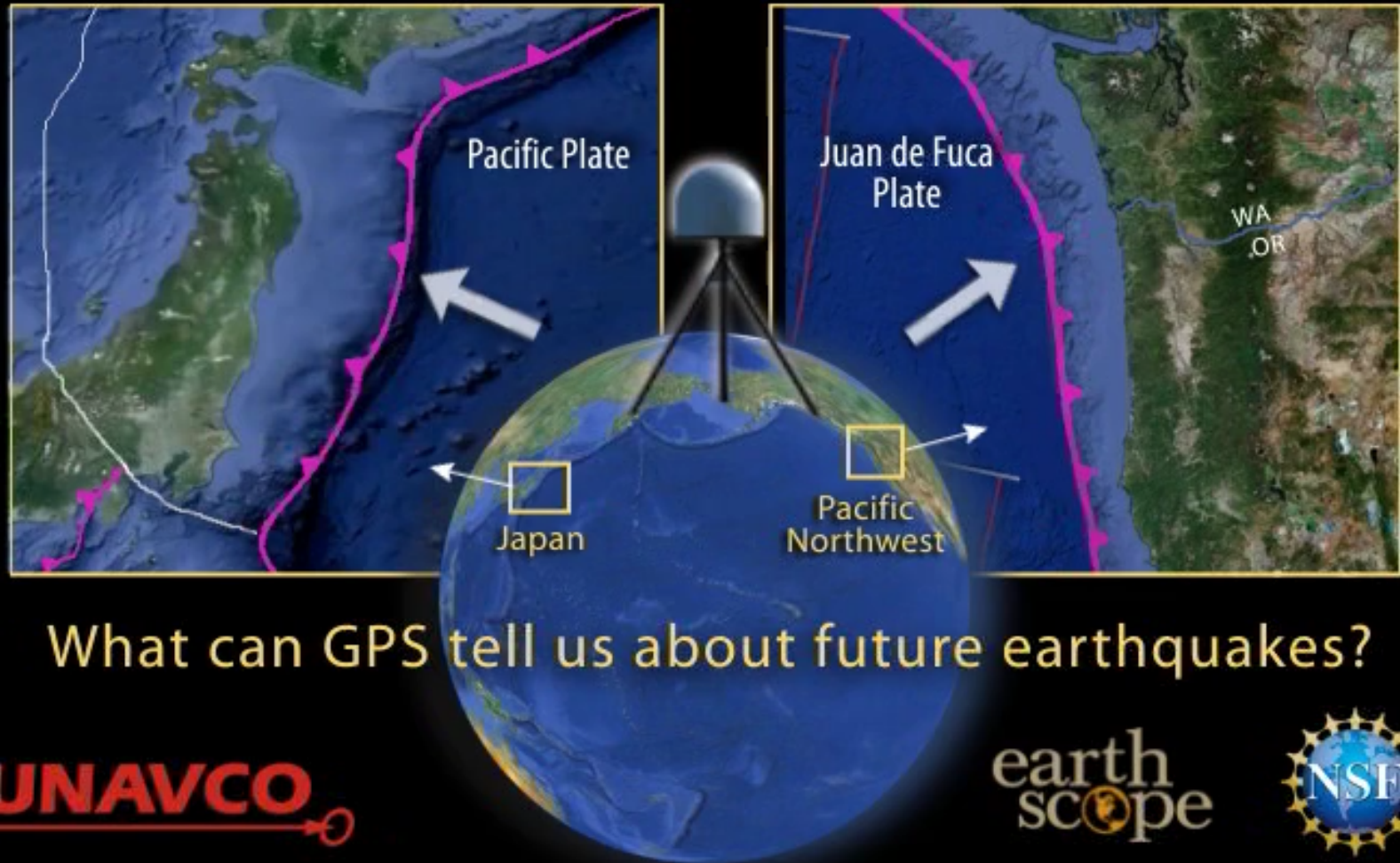
Total motion  
since 1700 AD  
= 18.0 feet





# Cascadia GPS Animation

## Mirror-image Subduction Settings?



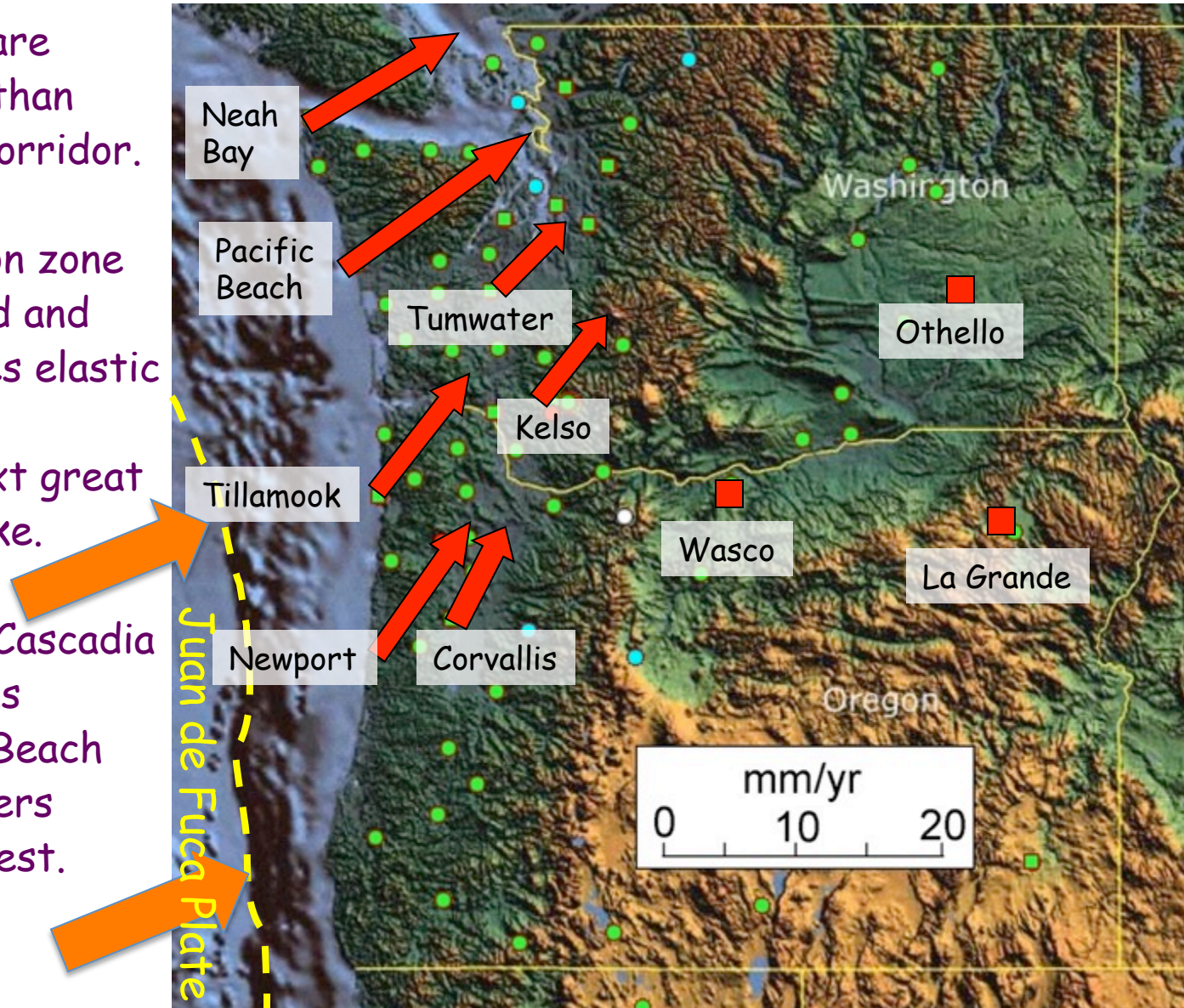
# Cascadia Locked and Loading

*GPS Gum Drop*

Stations on coast are moving NE faster than stations in urban corridor.

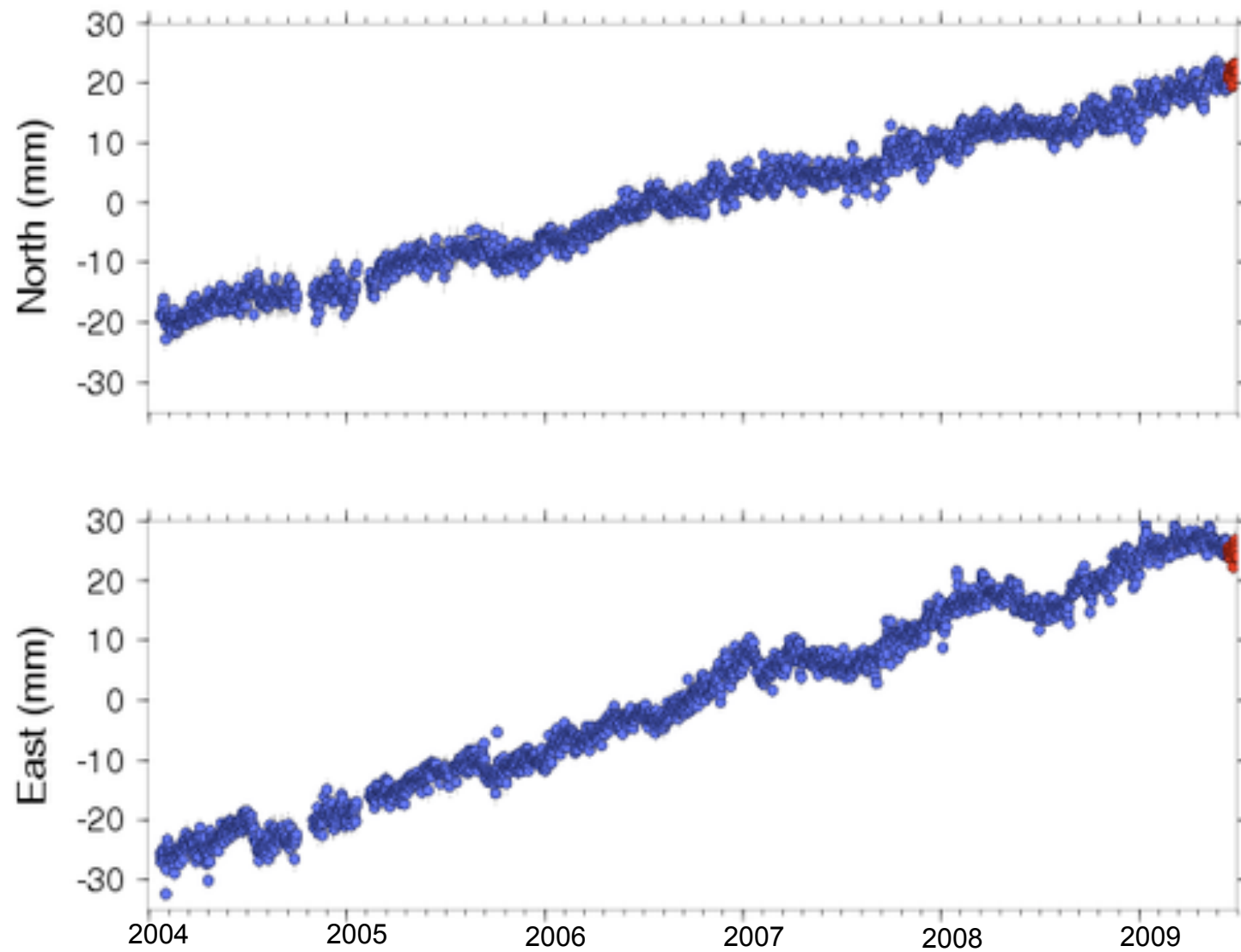
Cascadia subduction zone boundary is "locked and loading" as it stores elastic energy that will be released in the next great Cascadia earthquake.

If the next great Cascadia earthquake happens tomorrow, Pacific Beach will jump 5.35 meters (17.5 feet) southwest.

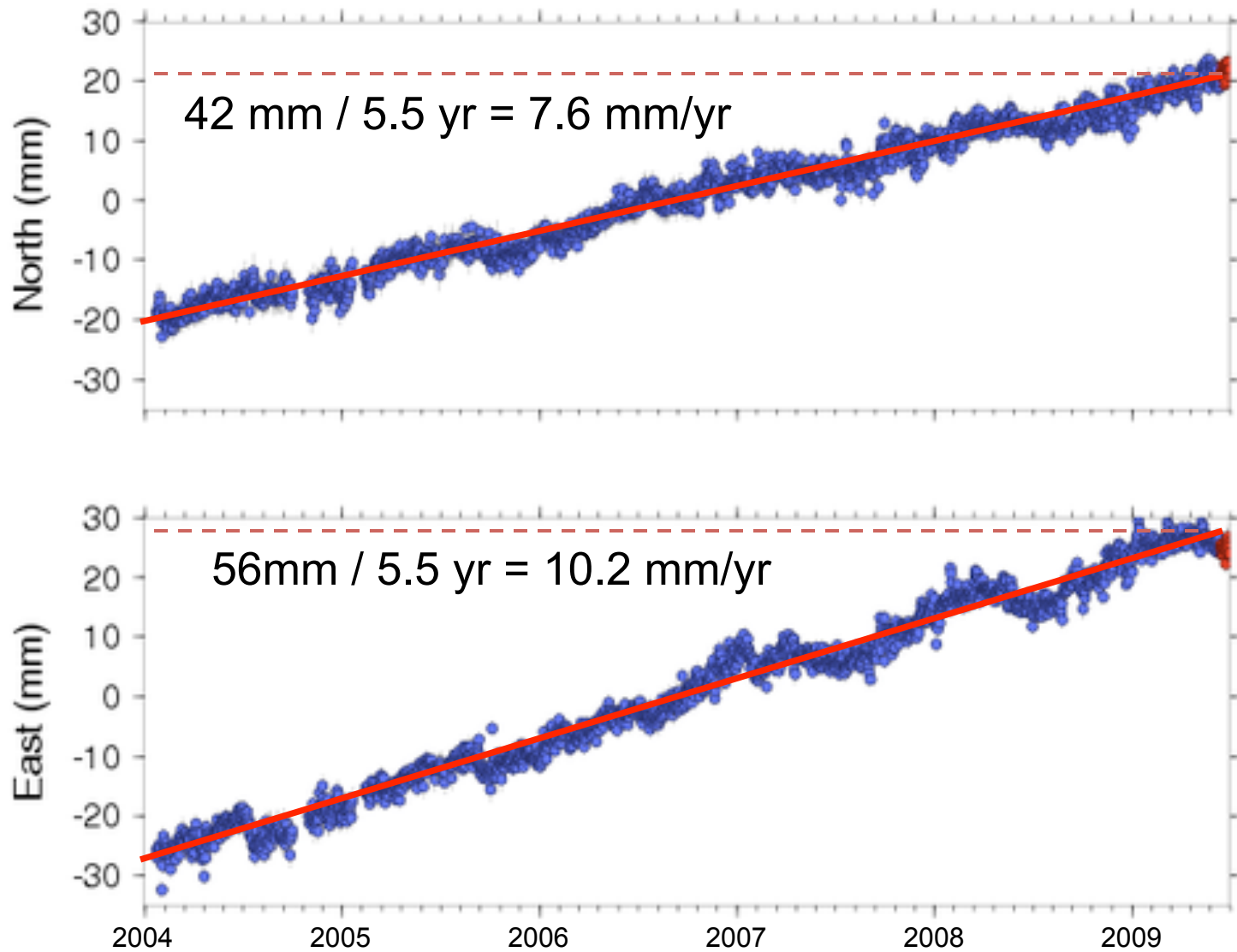




## Neah Bay, WA GPS Data

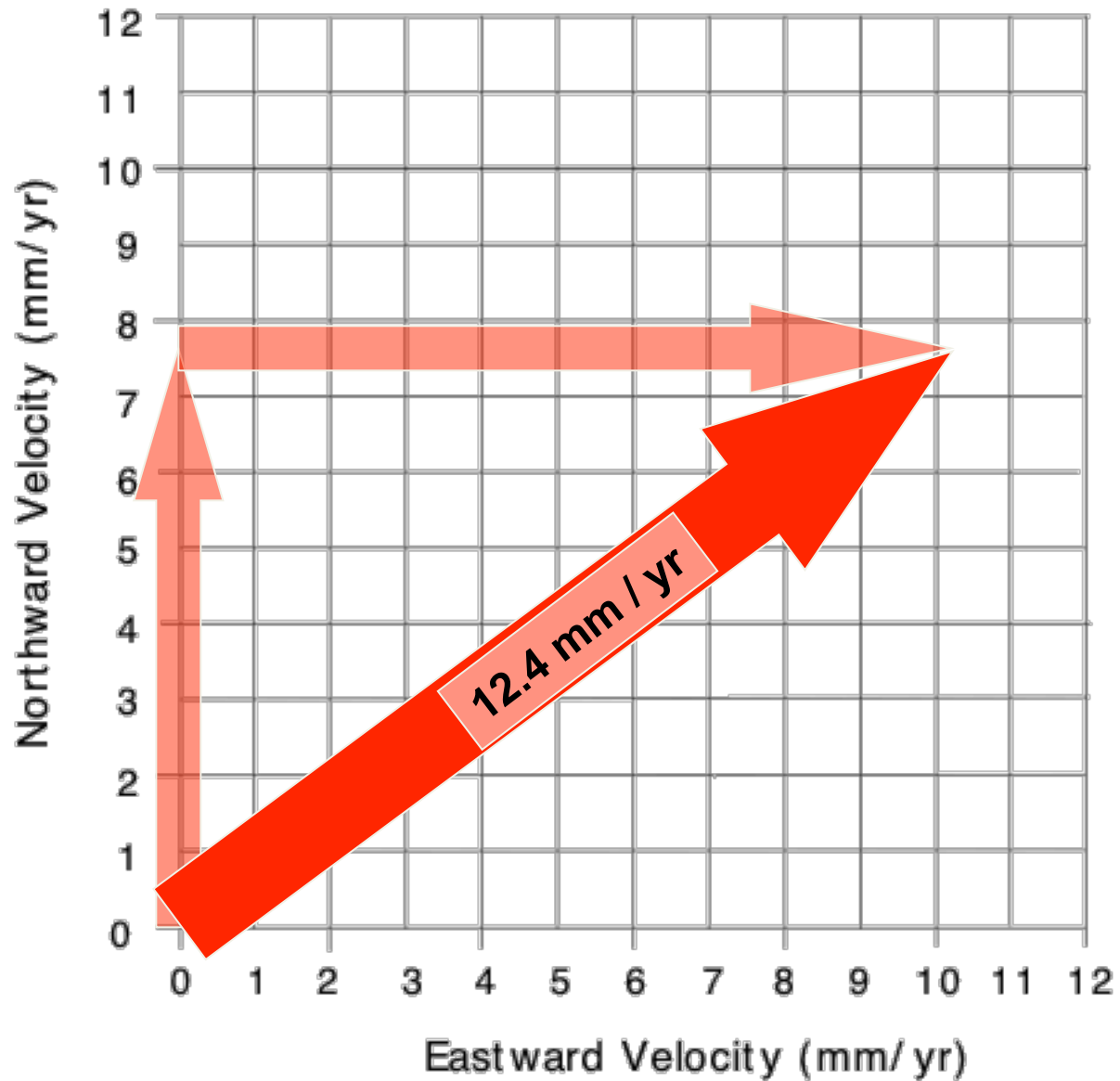


## Neah Bay, WA GPS Data





## Neah Bay, WA GPS Velocity



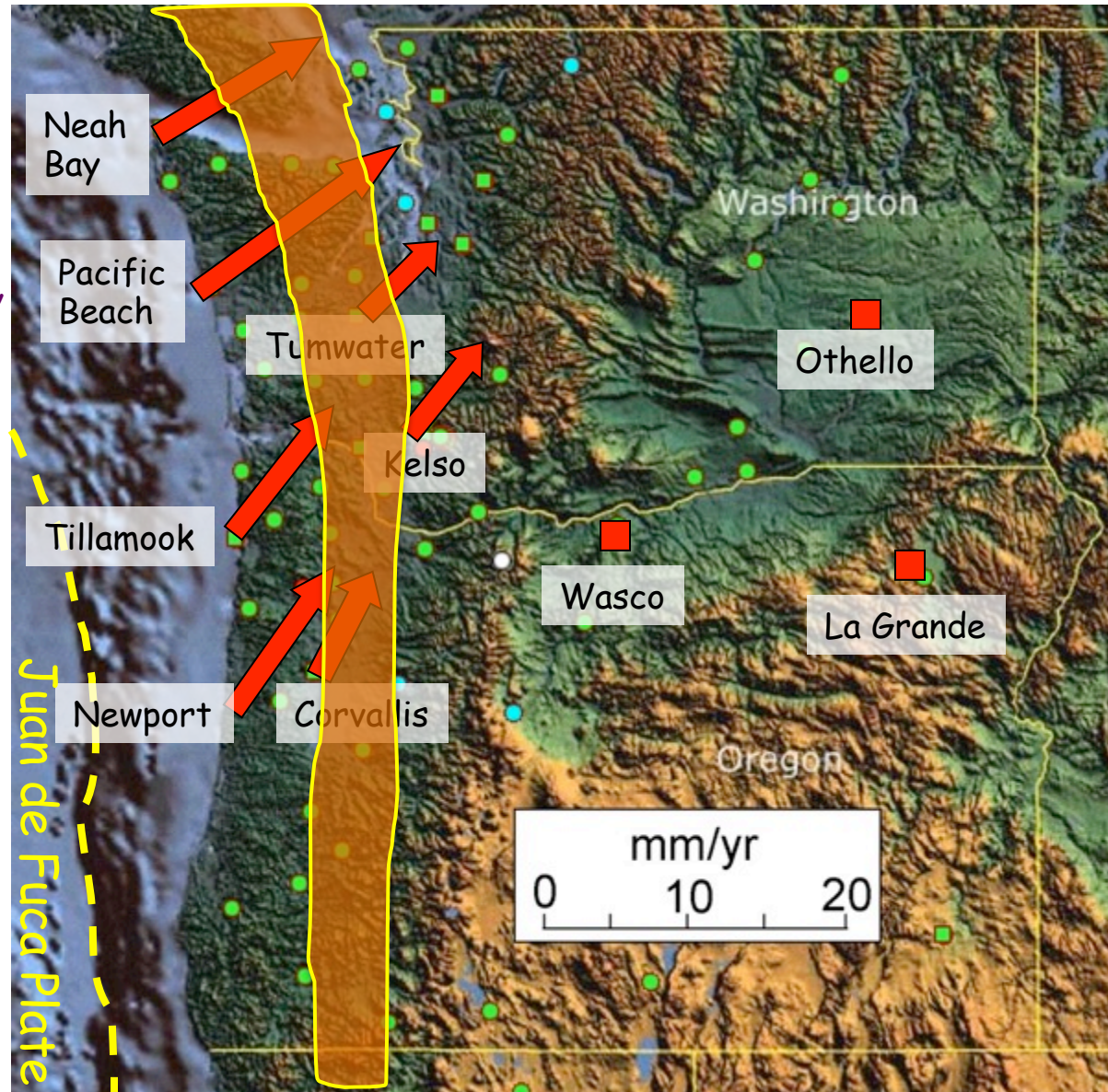
# Episodic Tremor and Slip

GPS receivers in western part of the Willamette Valley and Puget Lowlands, as well as the eastern fringe of the Coast Ranges, move in a "sawtooth pattern".

They move NE most of the time but backslide to the SW every 10 to 16 months.

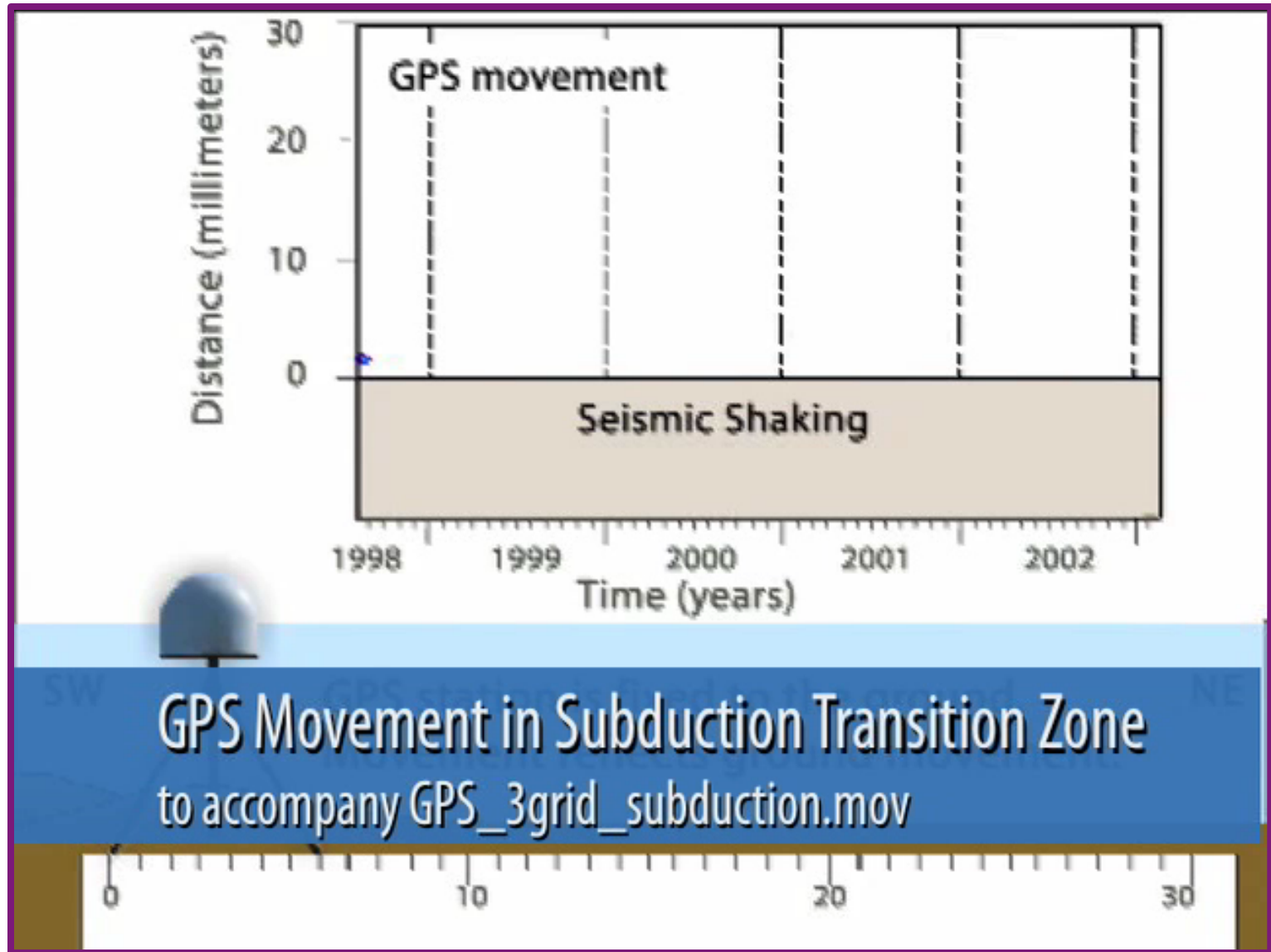
Low-amplitude seismic vibrations accompany the backwards motion.

This is "Episodic Tremor and Slip", a major new discovery.





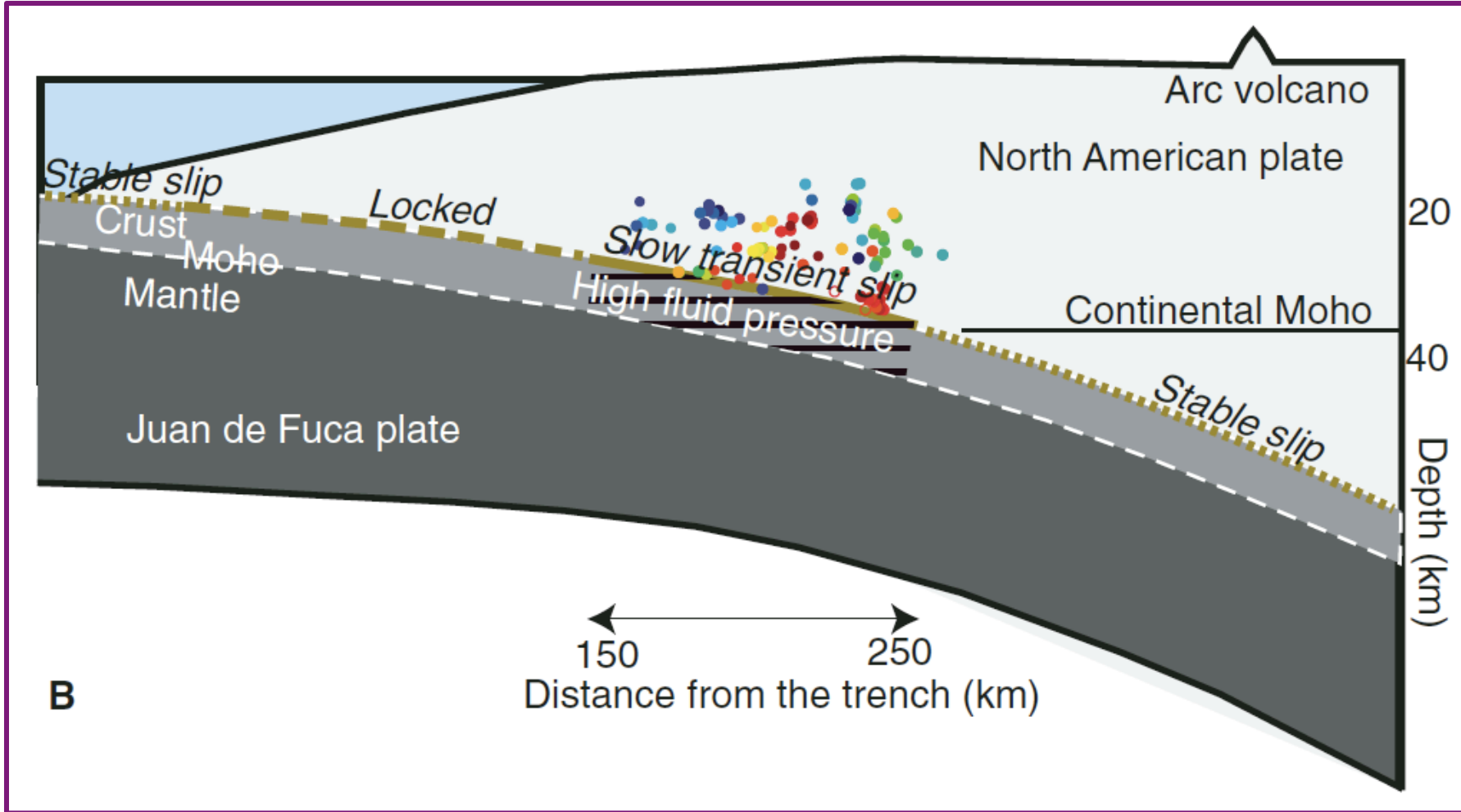
# Episodic Tremor and Slip



Animation by JENDA JOHNSON

## Two-Block EQ Model

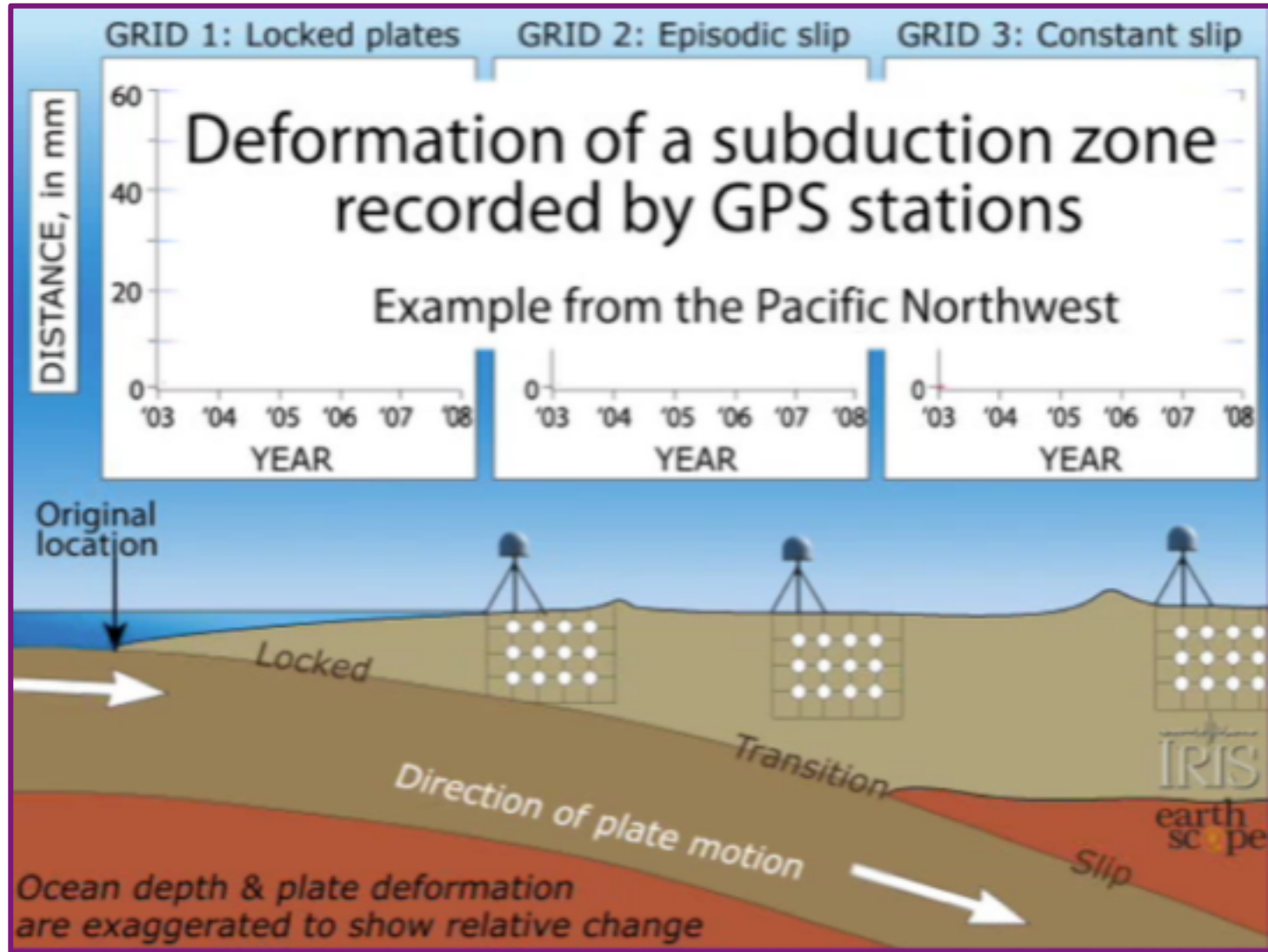
## Two-Block EQ Model



Slow slip between North American and Juan de Fuca plates at 20 - 40 km depth. A transitional behavior between the shallow locked zone and the continuously slipping zone deeper than 40 km.



# Episodic Tremor and Slip

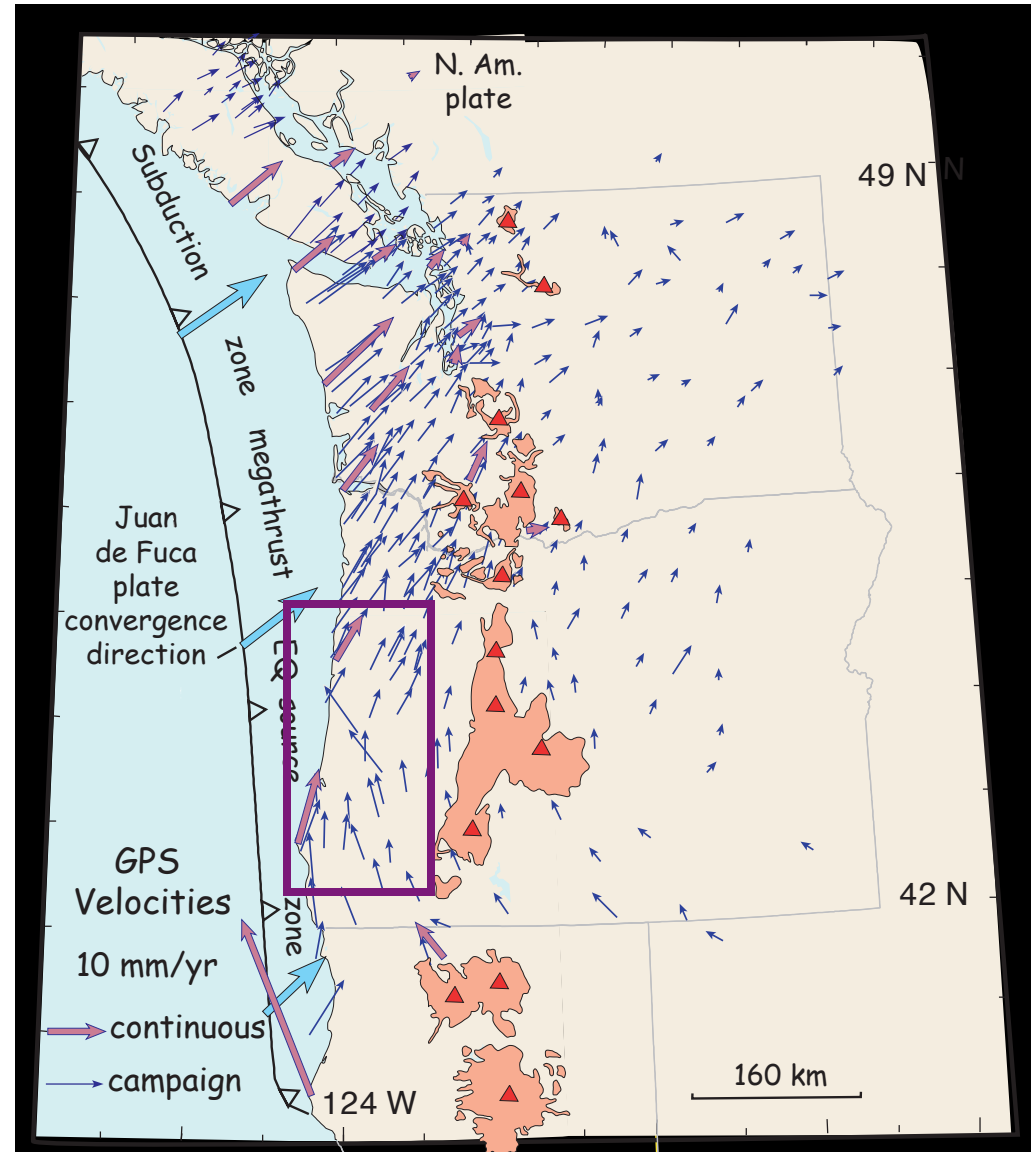


Animation by JENDA JOHNSON

# Measured GPS Velocities

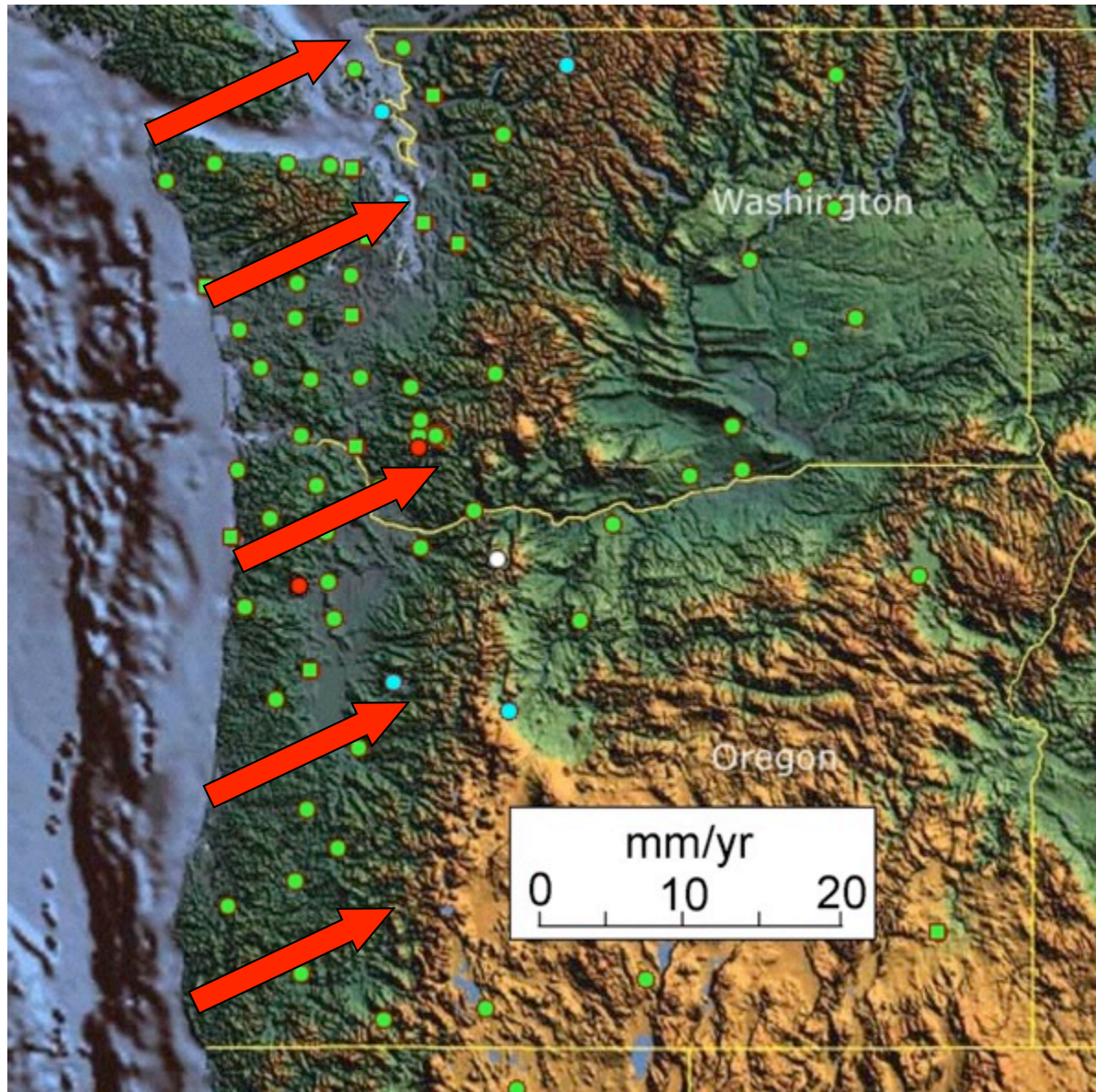
What's up with  
southwestern Oregon?

Shouldn't ALL the  
velocities vectors on  
PNW coast be parallel  
to Juan de Fuca  
motion as it converges  
with North America?





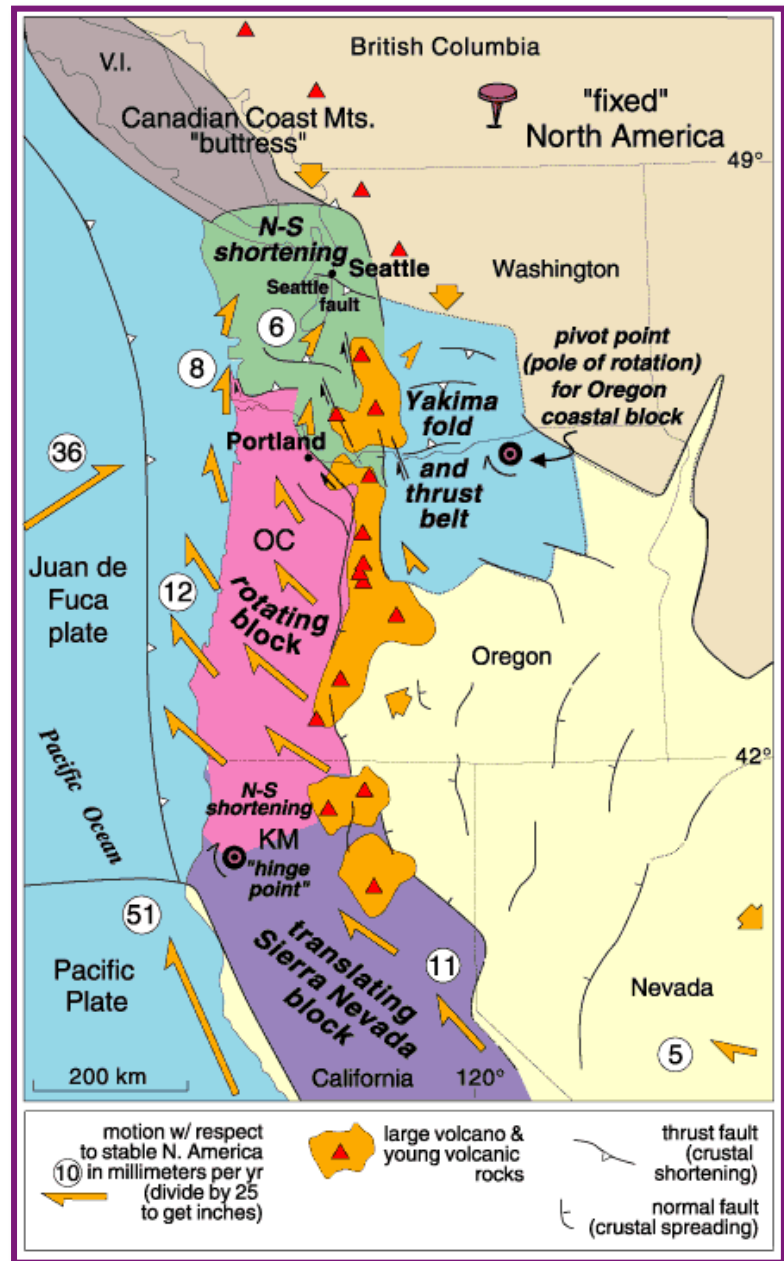
# Compression of Pacific Northwest Continental Margin



Juan de Fuca - North America convergence ALONE should produce simple pattern of velocities like this.

## PNW Crustal Block Motions

These crustal block motions ADD to the motions produced by Juan de Fuca - North America convergence.





# Crustal Block Motions + Plate Convergent Motions

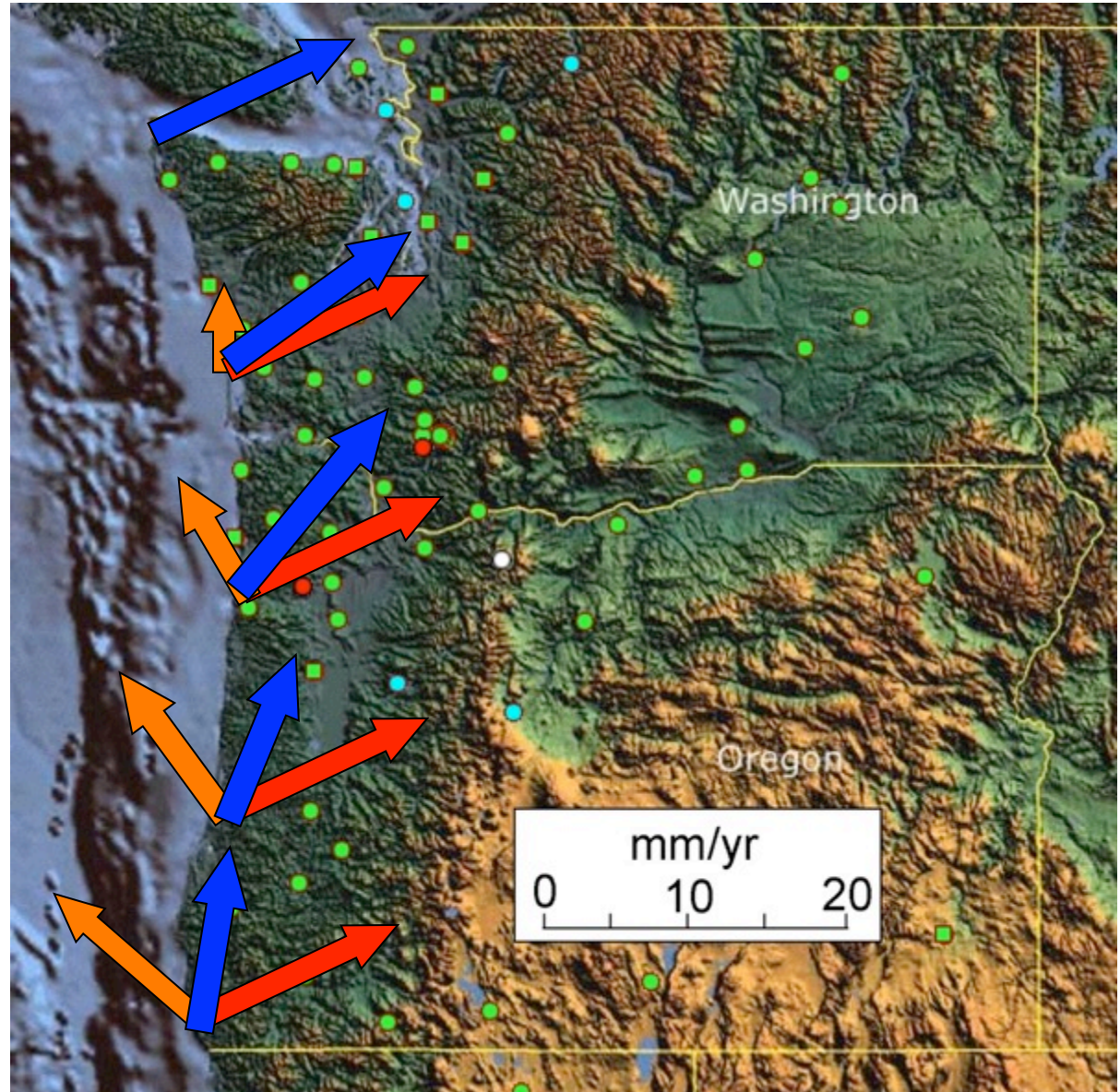
Convergence  
velocities in  
red.

+

Crustal block  
Motion  
velocities in  
orange.

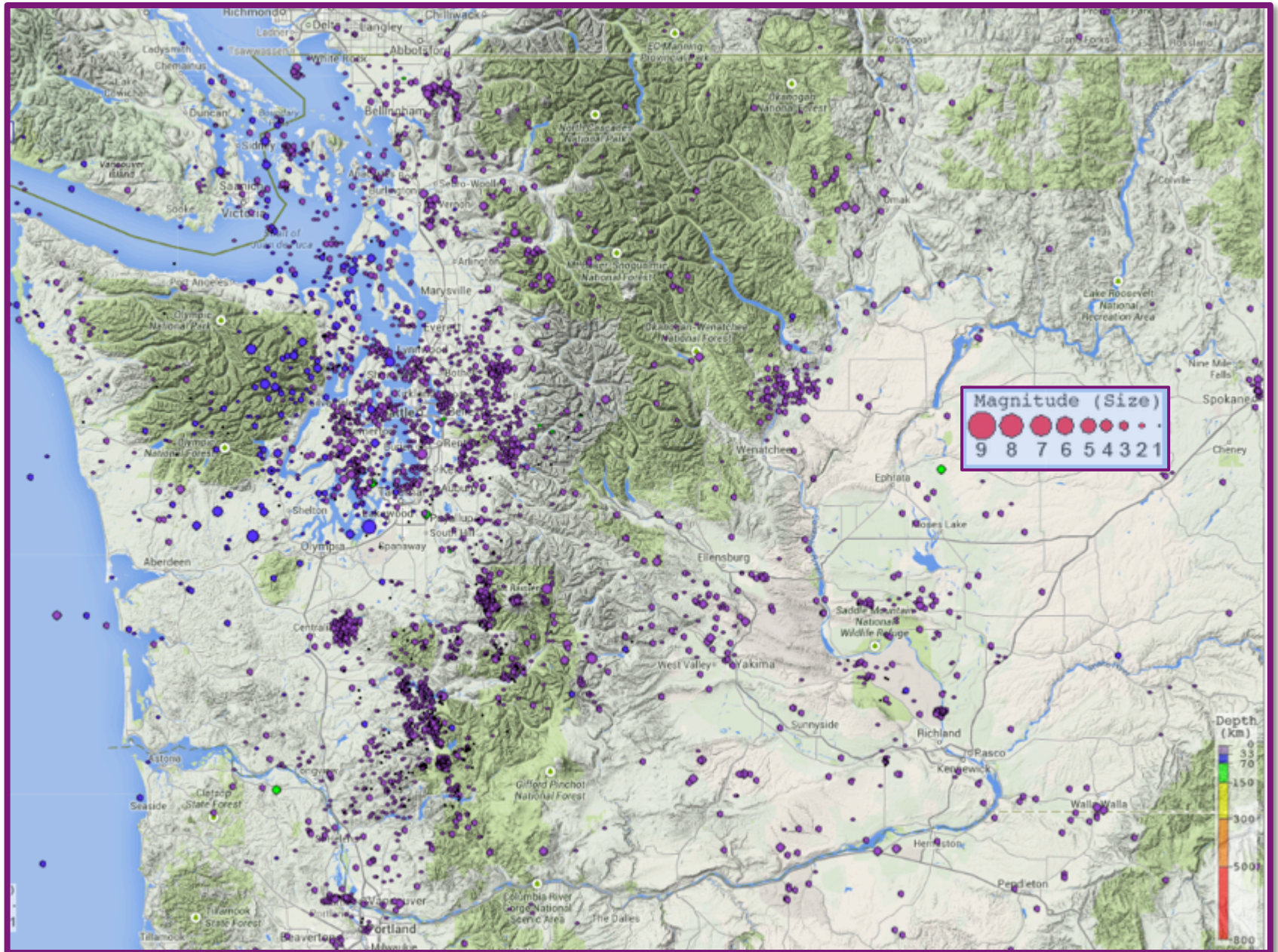
=

Observed  
GPS  
velocities.



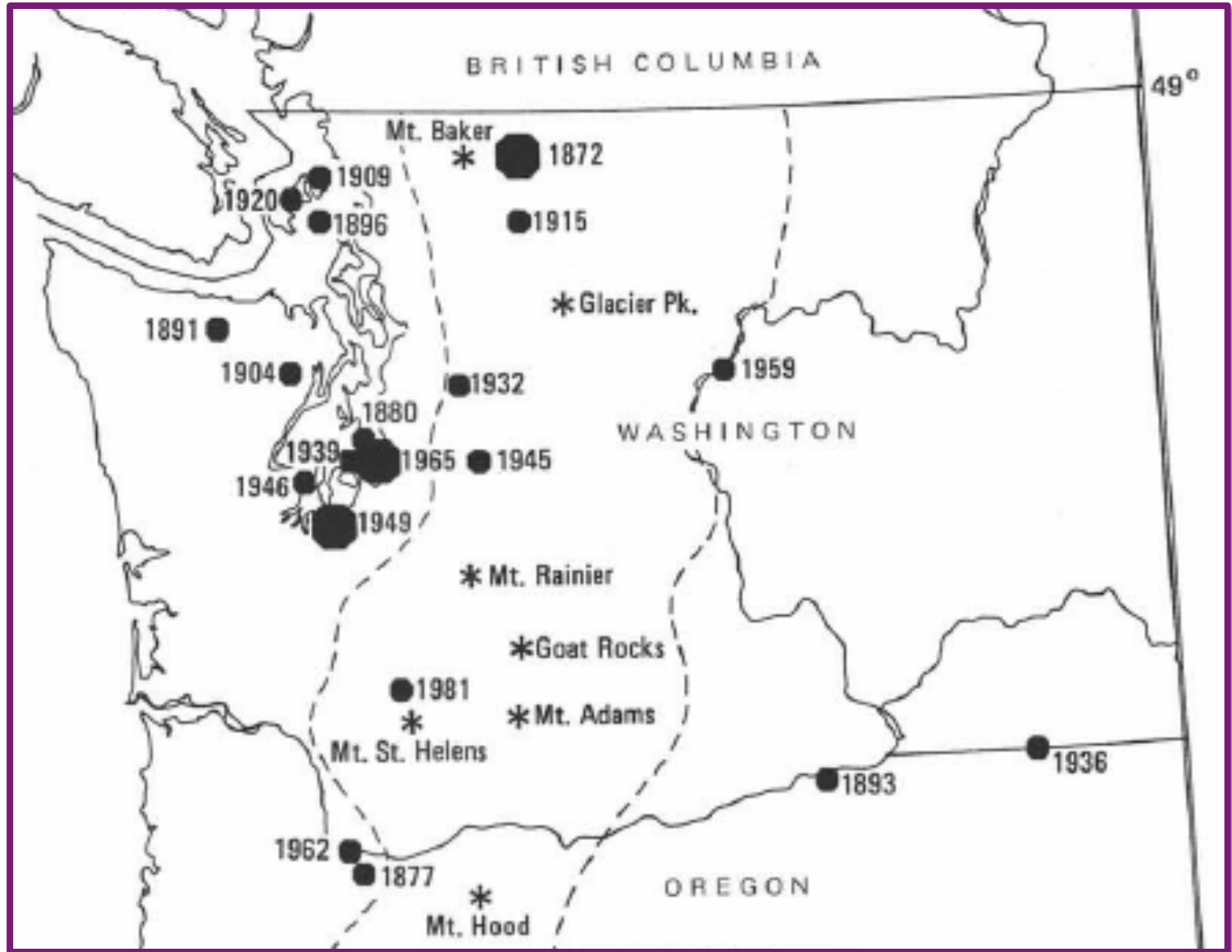


# Earthquakes in Washington 1981-2014





# Earthquakes in Washington 1877-1987



# Cascadia Earthquake Early Warning

Earthquake\_Early\_Warning\_Cascadia.mp4

**EXPLANATION**

-  Epicenter  
P waves (yellow)  
S waves (orange)
-  Area rupturing  
Area ruptured
-  Select GPS stations  
(arrows show movement)
-  Seismic stations

**Alert**

**Great earthquake!!  
> M8.5**

Time elapsed  
since quake:

 **0:20**  
min:sec

  
Coos Bay  
Cape Blanco  
Port Orford

  
GPS lurches >10 meters SW

04:04 06:56



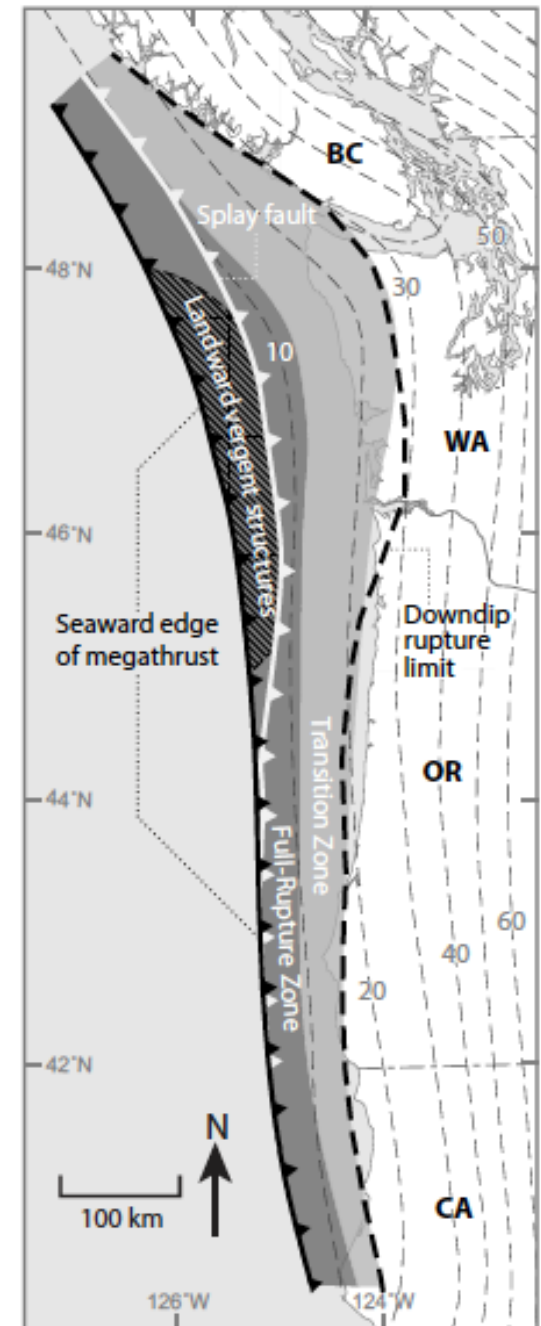
# Local Cascadia Tsunami

DOGAMI & WA DNR have published Tsunami Inundation Maps based on modeling of tsunamis generated by Cascadia megathrust earthquakes.

Important factors:

- Western edge of North American plate.
- Displacement during great earthquakes: How much? How deep? A splay fault?
- Bathymetry of ocean floor on continental slope and shelf.
- Shoreline topography.

Note that WA continental shelf is wider than OR continental shelf.

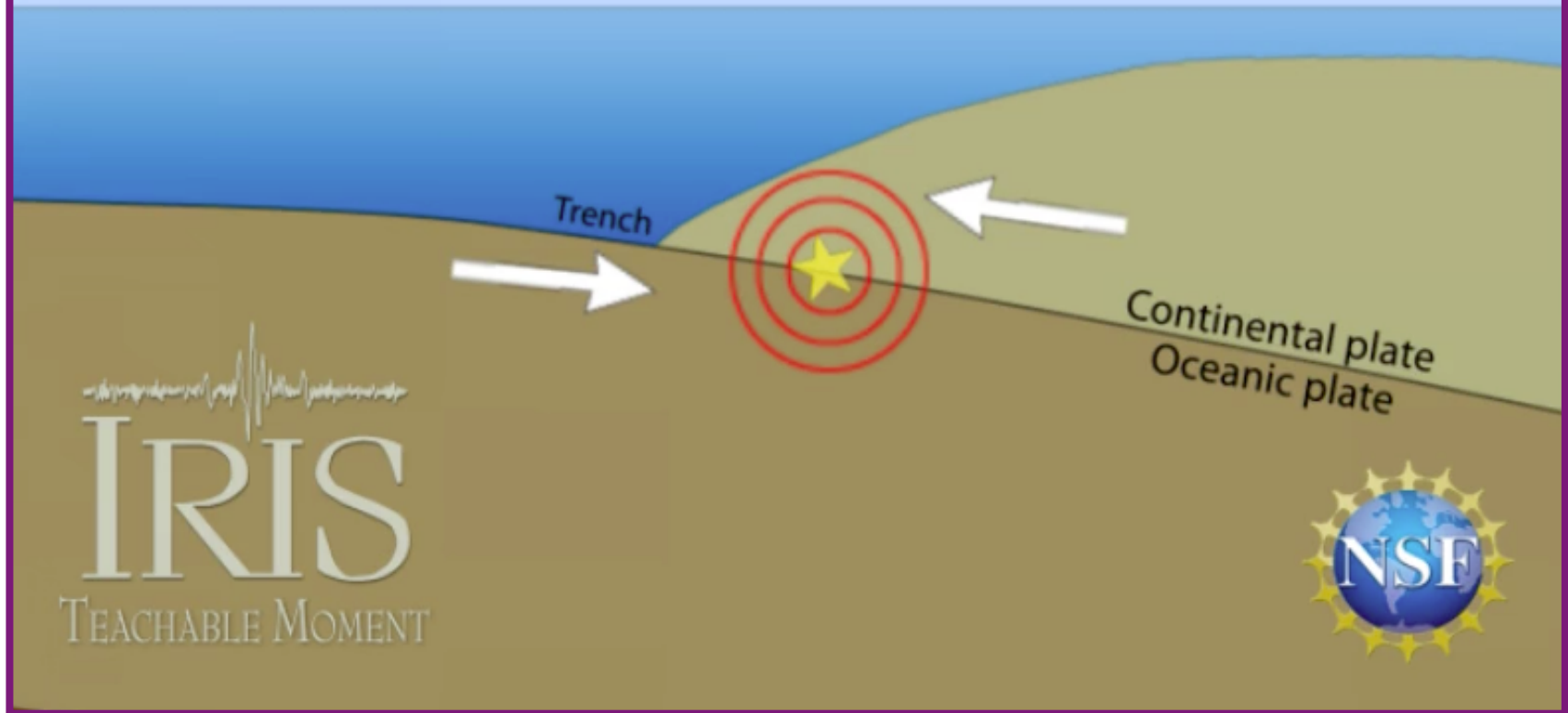


# Continental Shelf Deformation? Splay Faults?

## Tsunamis Generated by Megathrust Earthquakes

Processes that generate tsunamis include:

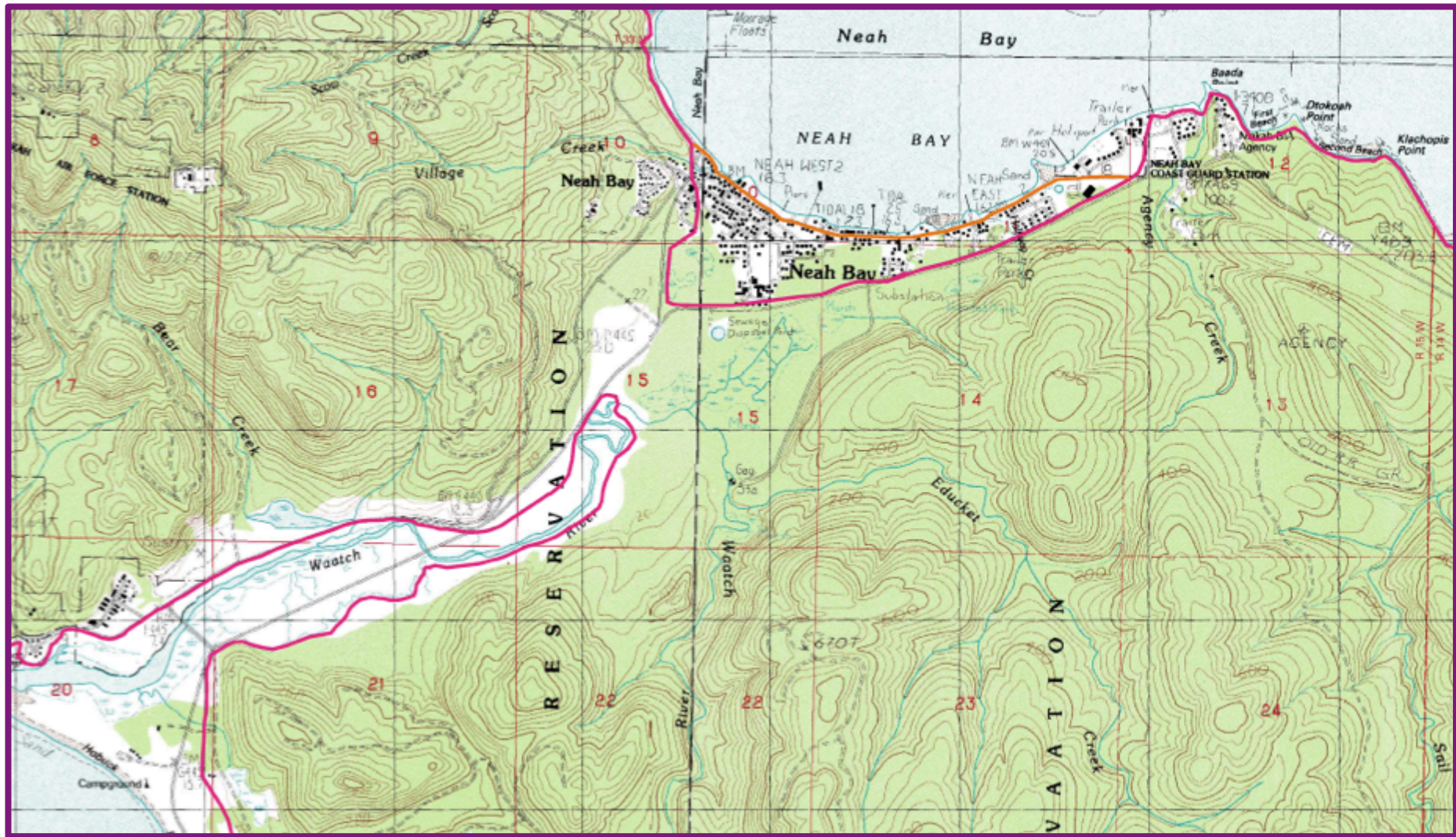
- 1) Trench rupture
- 2) Continental shelf deformation
- 3) Splay faults
- 4) Landslides





# Tsunami Inundation Map for Neah Bay

## *Tsunami Inundation Maps*



A tsunami generated by a M9 Cascadia subduction zone EQ is expected to inundate the areas below the red line.



## Tsunami Evacuation Map for Neah Bay



Tsunami Evacuation Zone for maximum Cascadia tsunami.



# Ocosta Elementary School

If you can't get out, go up.







# NOAA Video on Vertical Evacuation from Tsunamis

[NOAA Video on Vertical Evacuation from Tsunamis](#)

Aberc

## P398 (StaffordCrWA2006) NAM08

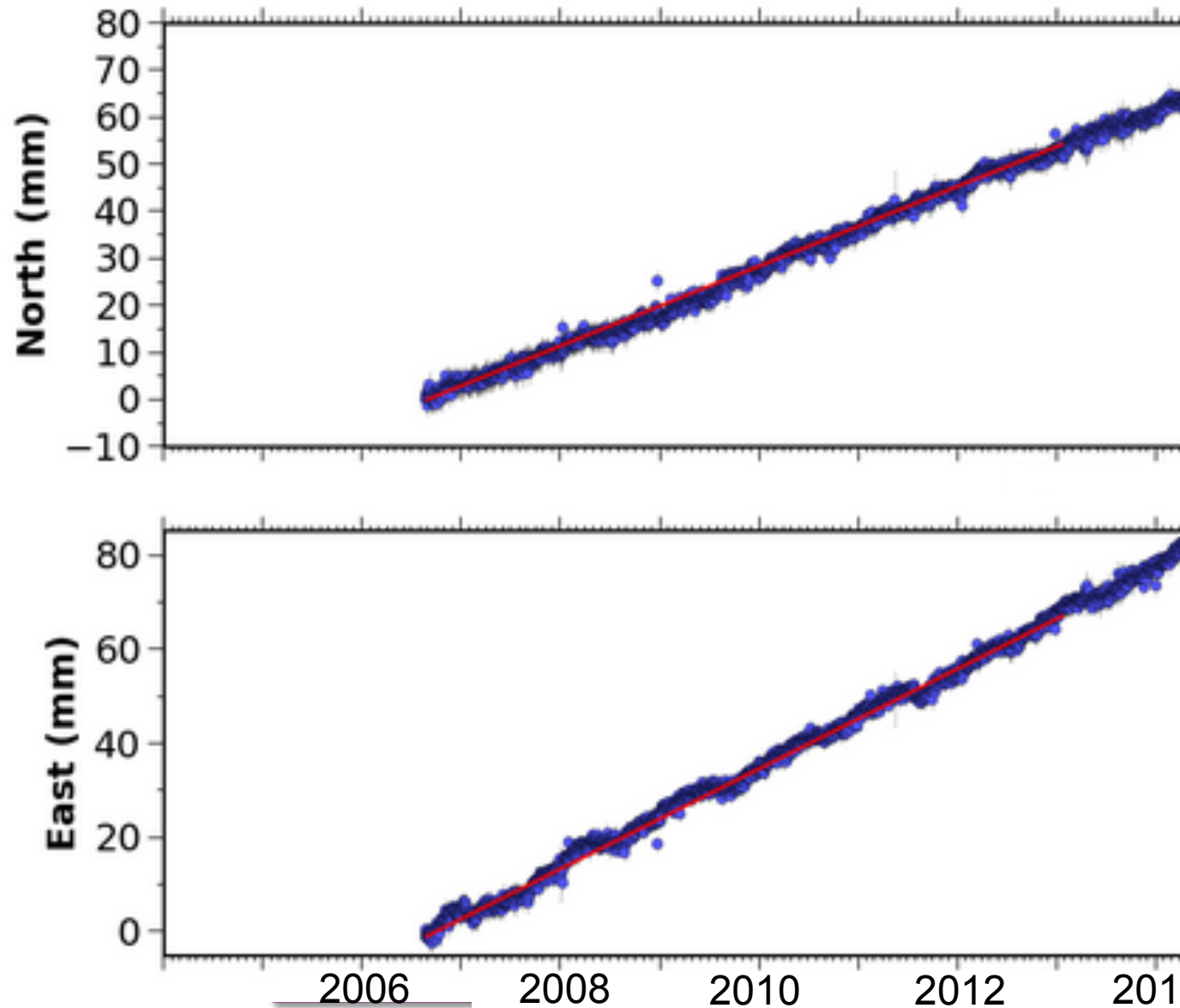
Processed Daily Position Time Series

Northward motion  
= 0.30 inch/yr

Eastward motion  
= 0.40 inch/yr

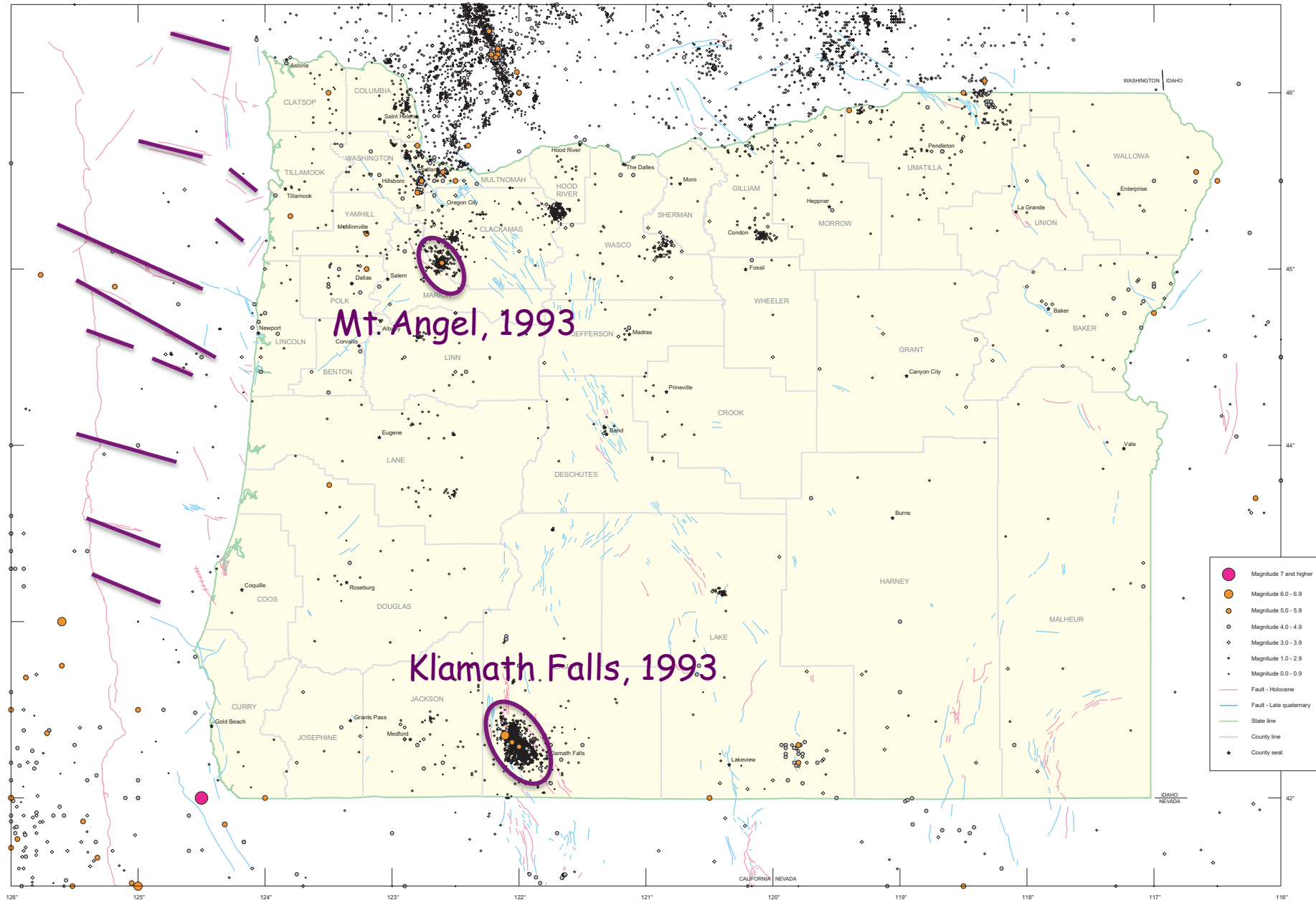
Total motion  
= 0.50 inch/yr

Total motion since  
= 13.1 feet

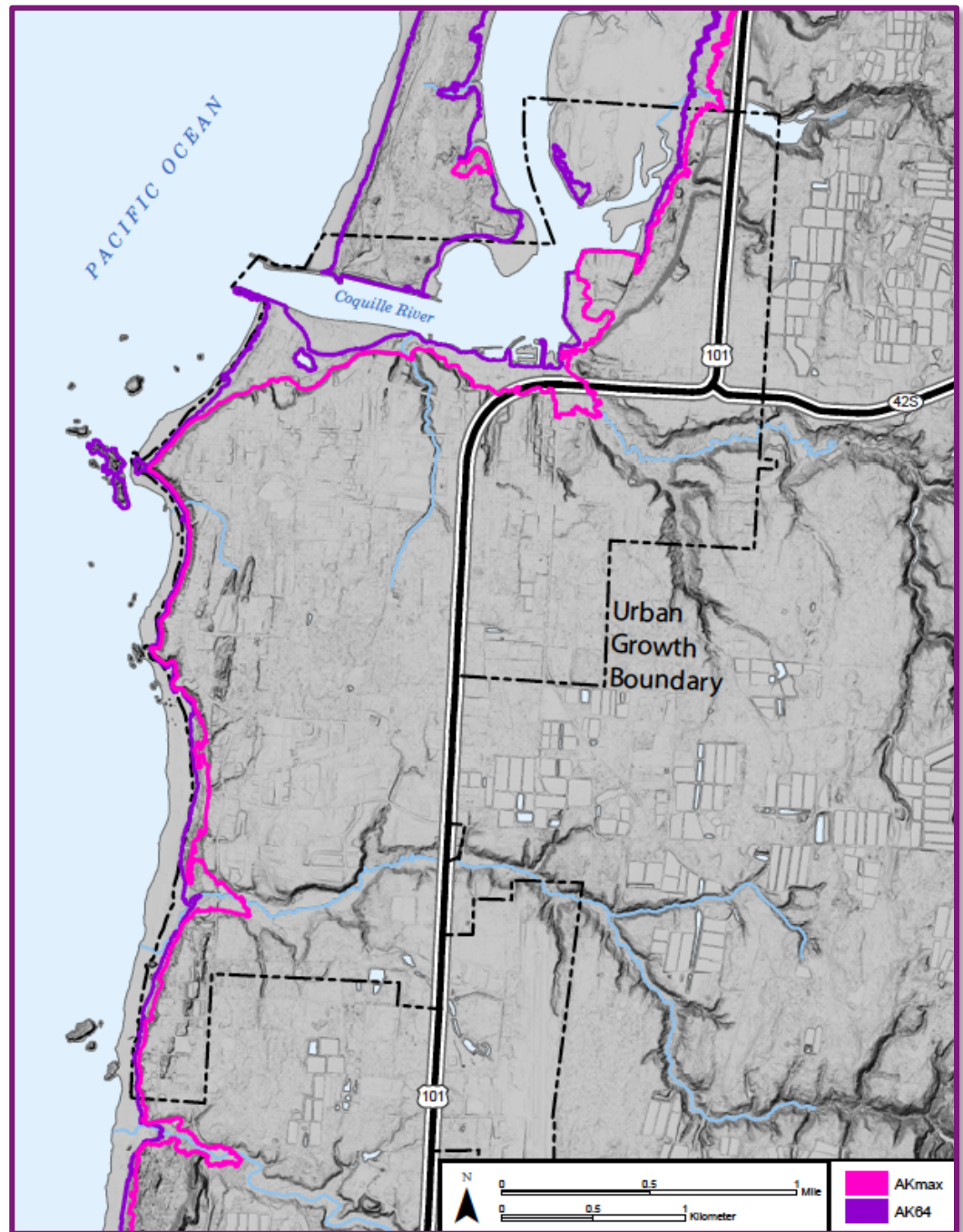




# Crustal Earthquakes in Oregon 1841 - 2002



# Distant Tsunami Inundation Map for Bandon, Oregon

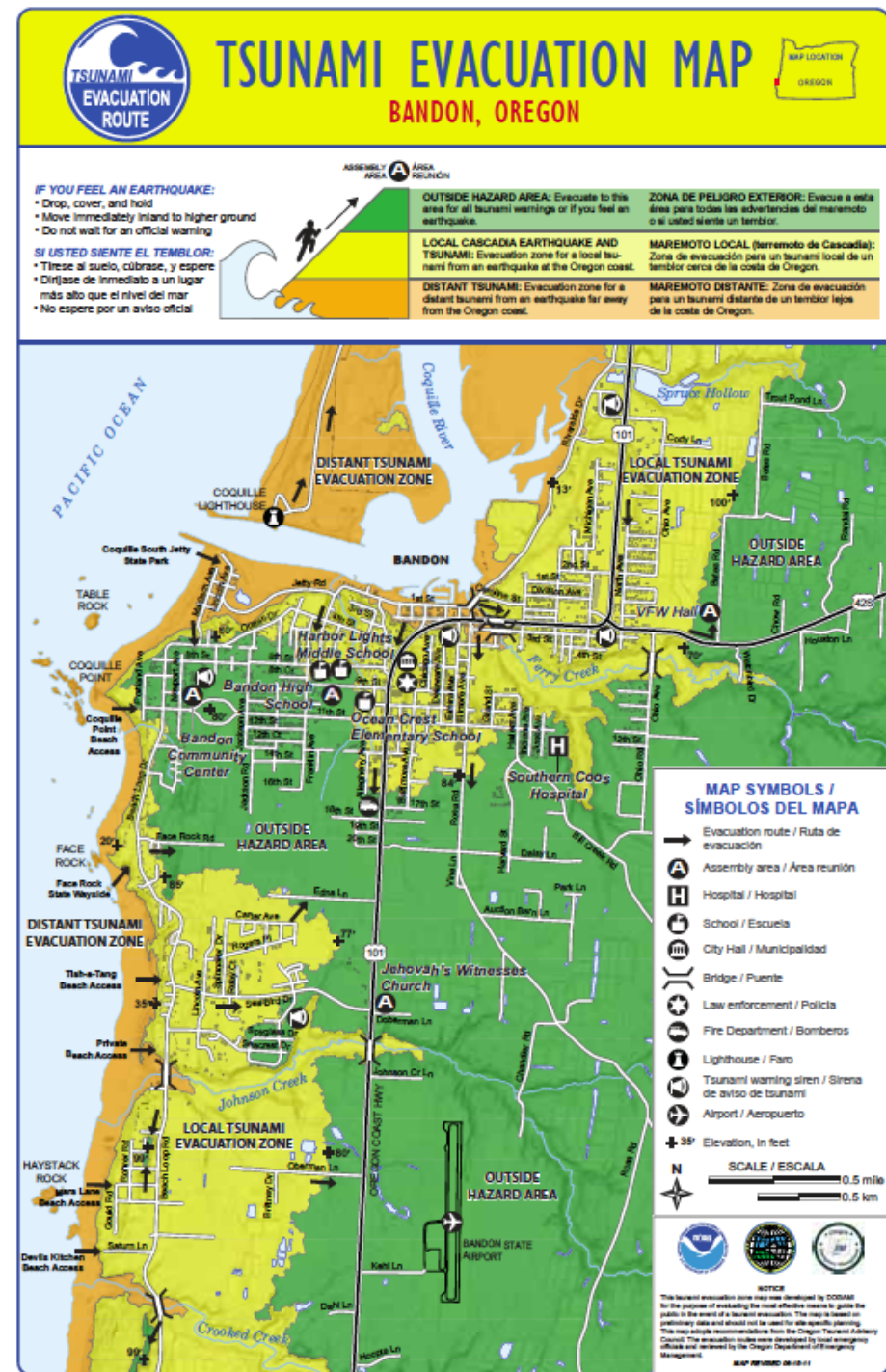




# Tsunami Evacuation Map for Bandon, Oregon

Distant tsunami evacuation zone determined from maximum Alaska tsunami.

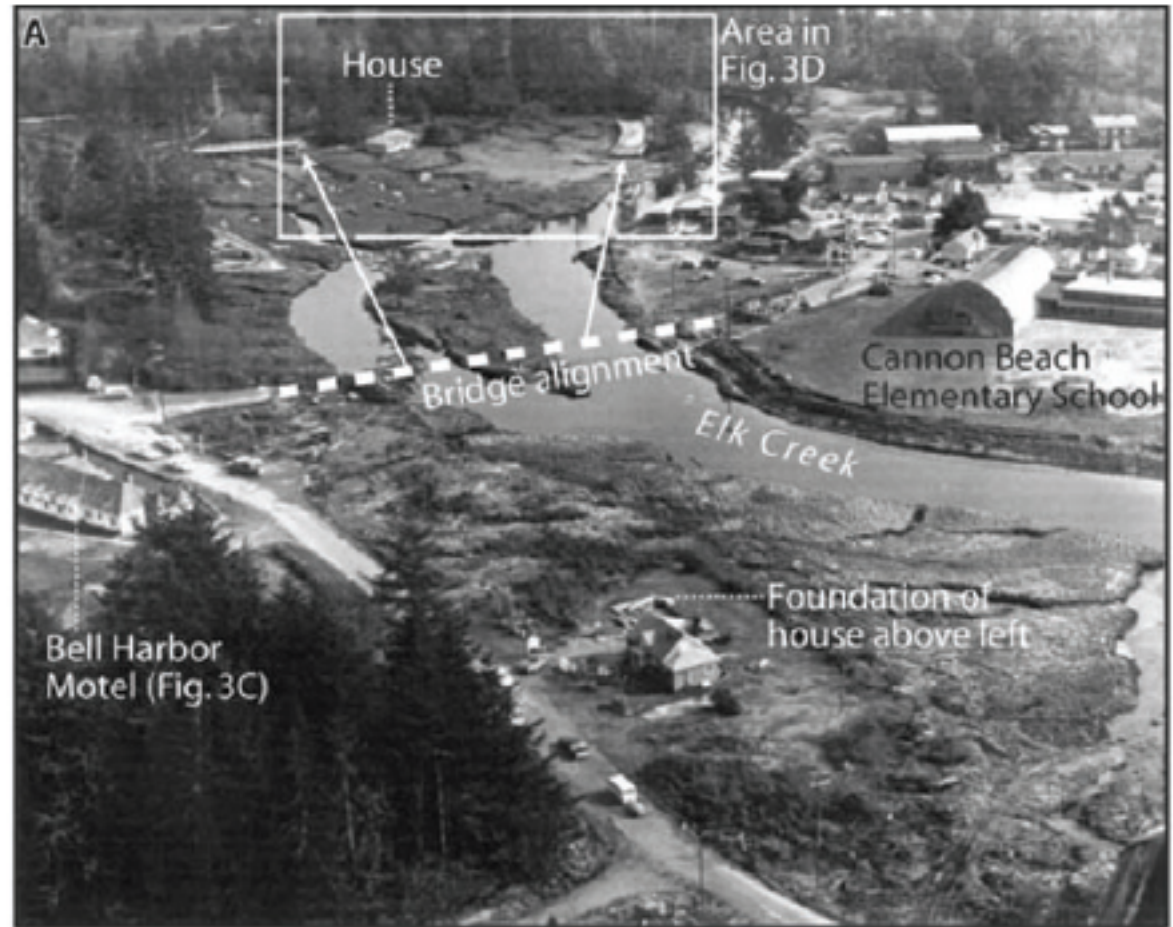
Local Tsunami Evacuation Zone determined from maximum Cascadia tsunami.



# Damage in Cannon Beach from 1964 Alaska Tsunami

Bridge over Elk Creek (now Ecola Creek) destroyed and displaced 300 m upstream.

House torn from foundation and displaced 400 m upstream.



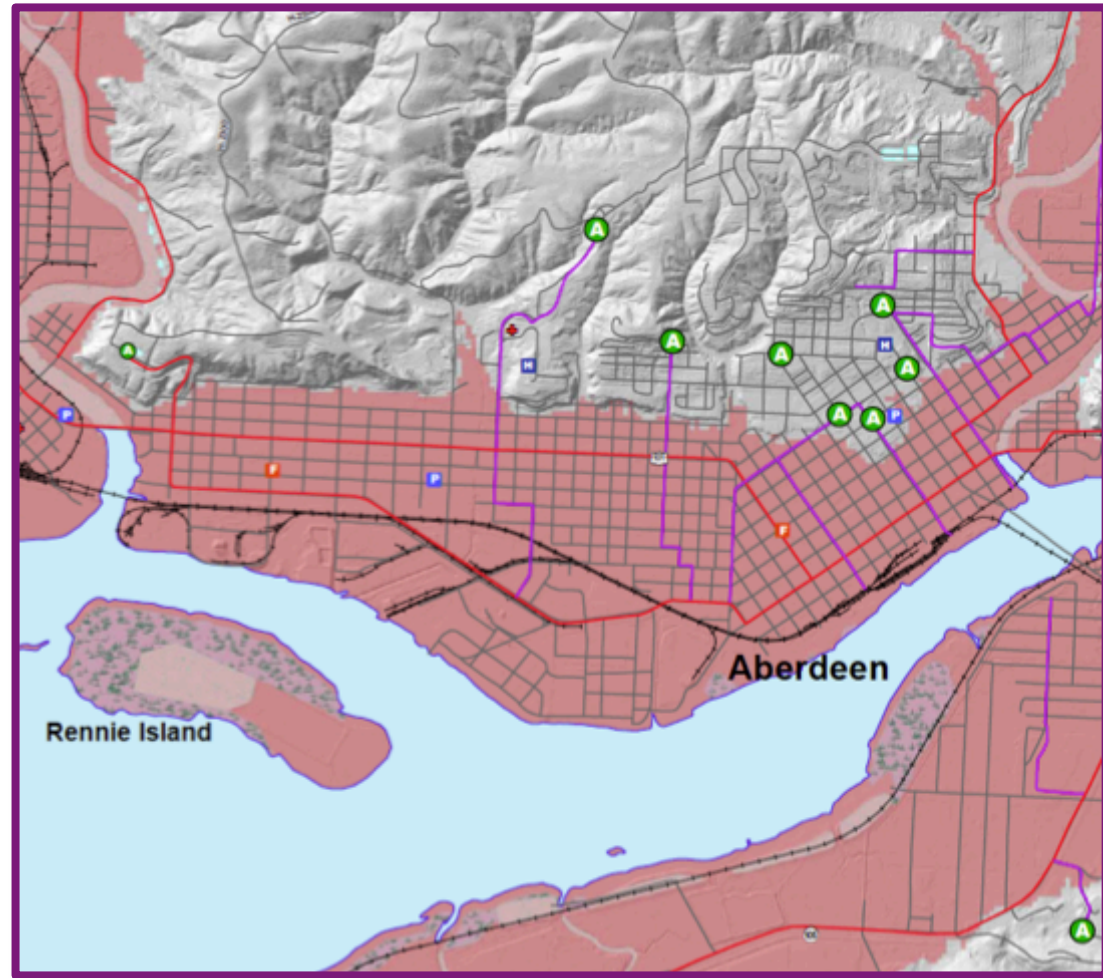
*From Priest and others, DOGAMI Special Paper 41, 2009.*

"Distant" tsunami: A tsunami generated by a distant earthquake (e.g. Alaska 1964; Japan 2011). The first waves will arrive several hours after the earthquake and may may arrive for many hours thereafter.



## Tsunami Inundation Map for Aberdeen

A tsunami generated by a M9 Cascadia subduction zone EQ is expected to inundate the salmon-colored areas.



# Tsunami Evacuation Map for Aberdeen

Tsunami Evacuation  
Zone determined  
from maximum  
Cascadia tsunami.

